

DAY 1

WEDNESDAY, APRIL 15

<div>9:00am–5:00pm</div> REGISTRATION
<div>9:00–10:00am and 10:00–11:00am</div> FIRST CONNECTIONS Founders’ Room, East Wing
<div>9:00–10:30am and 10:30am–12:00pm</div> WALKING TOURS From Entrance Hall, East Wing
<div>11:30am–1:00pm</div> LUNCH Garden Marquee
<div>11:45am–1:00pm</div> LUNCH: DELEGATE-LED DISCUSSIONS West Wing
<div>An Ecosystems Approach to Scaling Social Entrepreneurs</div> Classroom 2, West Wing
<div>Global Megatrends: How Does Latin America Fare?</div> Seminar 1, West Wing
<div>The Rising Tide of Entrepreneurship in MENA</div> Seminar 2, West Wing
<div>The Future of Social Enterprise, the Future of Impact</div> Seminar 3, West Wing
<div>Sustainable Sanitation Solutions for Urban Slums</div> Seminar 4, West Wing
<div>Using Culture to Change Culture</div> Seminar 8, West Wing
<div>Mental Health Interventions: Pre- and Post-Disaster</div> Seminar 9, West Wing
<div>Leveraging New and Old Technologies into Today’s Education Models</div> Seminar 10, West Wing

<div>1:30–2:45pm</div> SEMINARS
<div>Fighting Poverty, Designing for Happiness</div> Edmond Safra Lecture Theatre, East Wing
<div>The Dark Side of M&E</div> Rhodes Trust Lecture Theatre, East Wing
<div>Cutting Through the Clutter: Leveraging Media to Get Attention</div> Lecture Theatre 4, East Wing
<div>Leveraging Time and Talent for Social Impact</div> Lecture Theatre 5, East Wing
<div>Coping, Thriving, and Soaring</div> Seminar Room A, East Wing
<div>3:00–4:15pm</div> SEMINARS
<div>Behavioral Science, Design, and Other Creative Hacks for Enabling Impact</div> Edmond Safra Lecture Theatre, East Wing
<div>Taking Your Donors and Fundraising to the Next Level</div> Rhodes Trust Lecture Theatre, East Wing
<div>Click and Tell: Going Viral in a Digital World</div> Lecture Theatre 4, East Wing
<div>The Future of Work</div> Lecture Theatre 5, East Wing
<div>Building and Coaching Your Team</div> Seminar Room A, East Wing
<div>5:00–6:30pm</div> OPENING PLENARY New Theatre
<div>7:15–9:30pm</div> DELEGATE DINNERS University of Oxford Colleges
<div>9:30–11:30pm</div> AFTER-HOURS PUB NIGHT The Oxford Retreat
<div>9:30–11:30pm</div> SUNDANCE INSTITUTE FILM SCREENING New Theatre

DAY 2

THURSDAY, APRIL 16

<div>8:00–10:00am</div> BREAKFAST AND NETWORKING Garden Marquee
<div>8:30–9:30am</div> FIRST CONNECTIONS Founders’ Room, East Wing
<div>8:30–9:30am</div> GUIDED MEDITATION Seminar 7, West Wing
<div>10:00–11:15am</div> CORE SESSIONS
<div>The Great Paradigm Shift</div> Nelson Mandela Lecture Theatre, East Wing
<div>The Story of Change: Revolution Begins in the Imagination</div> Edmond Safra Lecture Theatre, East Wing
<div>Bringing In Big Money: Innovative Financing Meets Inclusive Business</div> Rhodes Trust Lecture Theatre, East Wing
<div>Down is Not Defeated</div> Lecture Theatre 4, East Wing
<div>India at the Crossroads</div> Lecture Theatre 5, East Wing
<div>11:30am–1:00pm</div> LUNCH Garden Marquee
<div>11:45am–1:00pm</div> LUNCH: CORE SESSIONS
<div>Beyond Better: How Do We Know We’re Changing the Status Quo?</div> Pyramid Room, West Wing
<div>Expect the Unexpected: Building in Plan B</div> Lecture Theatre 6, West Wing
<div>11:45am–1:00pm</div> LUNCH: DELEGATE-LED DISCUSSIONS West Wing
<div>Building Partnerships for Impact at Scale</div> Classroom 2, West Wing
<div>Delivering Water’s Promise: Getting People the Water They Need</div> Seminar 1, West Wing

<div>The Resilience Exchange: Accelerating Social Change</div> Seminar 2, West Wing
<div>Every Child in School and Learning Well: A Call to Action</div> Seminar 3, West Wing
<div>In Search of the Holy Grail: Evaluating for Impact</div> Seminar 4, West Wing
<div>The Path from Innovation to Impact in Global Health</div> Seminar 8, West Wing
<div>The Promise of Social Entrepreneurship in Emerging Markets</div> Seminar 9, West Wing
<div>Moving Beyond the “Like” Button</div> Seminar 10, West Wing
<div>1:15–2:30pm</div> CORE SESSIONS
<div>Zero Carbon the Climate Justice Way</div> Nelson Mandela Lecture Theatre, East Wing
<div>When Beliefs Collide: Religion, Geopolitics, and Power</div> Edmond Safra Lecture Theatre, East Wing
<div>Never Again? The Ebola Epidemic’s Warning About Critical Infrastructure Gaps</div> Rhodes Trust Lecture Theatre, East Wing
<div>Global Development: What Should We Focus On and How Will We Measure Success?</div> Lecture Theatre 4, East Wing
<div>Supplier Capacity Development: Moving from Enforcers to Partners</div> Lecture Theatre 5, East Wing
<div>3:00–4:30pm</div> NETWORKING ACTIVITIES
<div>Human-Centered Design to Help Solve Youth Employment: A Session with IDEO.org</div> Seminar Room A, East Wing
<div>Finding Your Story and Making it Count: A Session with Sundance</div> Pyramid Room, West Wing
<div>5:30–7:00pm</div> SKOLL AWARDS FOR SOCIAL ENTREPRENEURSHIP New Theatre
<div>7:00–9:00pm</div> SKOLL AWARDS RECEPTION Ashmolean Museum of Art and Archaeology

DAY 3

FRIDAY, APRIL 17

<div>8:00–10:00am</div> BREAKFAST AND NETWORKING Garden Marquee
<div>8:30–9:30am</div> FIRST CONNECTIONS Founders’ Room, East Wing
<div>8:30–9:30am</div> GUIDED MEDITATION Seminar 7, West Wing
<div>10:00–11:15am</div> CORE SESSIONS
<div>Unleashing Girls’ Power</div> Nelson Mandela Lecture Theatre, East Wing
<div>Hot Topics: The Fine Line Between Informing and Shaping Public Opinion</div> Edmond Safra Lecture Theatre, East Wing
<div>Funding Impact at Scale Through Market Segmentation</div> Rhodes Trust Lecture Theatre, East Wing
<div>Cities: Engines of Transformational Change</div> Lecture Theatre 4, East Wing
<div>How Fast Can Small Grow? The Case for Solar Power</div> Lecture Theatre 5, East Wing
<div>11:30am–1:00pm</div> LUNCH Garden Marquee
<div>11:45am–1:00pm</div> LUNCH: CORE SESSION
<div>What’s So Funny? The Role of Comedy in Social Change</div> Lecture Theatre 6, West Wing
<div>11:45am–1:00pm</div> LUNCH: DELEGATE-LED DISCUSSIONS West Wing
<div>Mobilizing Technical Assistance to Catalyze Inclusive Markets</div> Classroom 2, West Wing
<div>Lessons from a Social Entrepreneur</div> Seminar 1, West Wing

<div>Divesting from Fossil Fuels, Investing in Healthy Energy</div> Seminar 2, West Wing
<div>Scaling Social Impact: From Exploration to Action</div> Seminar 3, West Wing
<div>Ending the Industrial Exploitation of Tropical Forests</div> Seminar 4, West Wing
<div>Citizen Witnessing: Challenges and Opportunities</div> Seminar 8, West Wing
<div>Bridging Water and Politics to Achieve Scale</div> Seminar 9, West Wing
<div>The Shifting Tide of Human Rights Philanthropy</div> Seminar 10, West Wing
<div>1:15–2:30pm</div> CORE SESSIONS
<div>The Age Before Impossible: Young Voices, Big Dreams</div> Nelson Mandela Lecture Theatre, East Wing
<div>Food, Farming and the Future: How Can We Feed a Growing Global Population Responsibly?</div> Edmond Safra Lecture Theatre, East Wing
<div>Tech Partnerships: Essential Impact Accelerators</div> Rhodes Trust Lecture Theatre, East Wing
<div>Beating the Odds: Lessons Learned from Social Innovators in Government</div> Lecture Theatre 4, East Wing
<div>3:30–5:00pm</div> CLOSING PLENARY New Theatre

WELCOME



Belief. “Within every social entrepreneur is an unwavering belief that even the most intractable problem offers an unsurpassed opportunity for change,” write Sally Osberg and Roger Martin in their new book to be released later this year.

Belief makes us human. It makes the seemingly impossible, possible. It is the origin of purpose and action. Without belief, social entrepreneurs could neither envision nor create a more peaceful and prosperous world.

Yet, in the current zeitgeist, belief often gets a justifiably bad rap. In the name of belief, people deny climate change; justify violence; and perpetuate cycles of retribution.

We’ve made belief the focal point of our 12th Annual Skoll World Forum to draw attention to its power to propel us forward.

Martin Luther King, Jr.’s dream was his belief that all people could be equal and enjoy the same freedoms. Nearly 50 years later, his vision lives on and continues to guide and drive us toward a better future.

We hope that you make the most of what promises to be a spectacular Forum—edifying and uplifting, and as ever, boundary-pushing.

With our shared belief in a better world; in “good people doing good things”; and in the possibility to change the unacceptable—we can all help “bend the arc of the moral universe toward justice.”

Jeff Skoll

Chairman, Jeff Skoll Group

*Skoll Foundation, Skoll Global Threats Fund, Participant Media,
and Capricorn Investment Group*



The very act of believing creates strength of its own.



BELIEF

We all share belief in a better, more equitable world for ourselves, our children, and generations beyond.

This conviction drives us—often relentlessly—to find the most effective and innovative solutions that provide real and sustainable opportunities for people to achieve their dreams.

But belief systems have also instigated extreme prejudice, cycles of retribution, and challenges to social progress in communities around the world.

As we work together and collaborate across sectors, issue areas, and geographies, we are deliberately deconstructing negative belief sets, coming together to drive the best of what's working in the world.

We believe social entrepreneurs and the innovators helping them drive solutions to some of the most pressing problems around the world hold the key to unlocking sustainable human progress.

Join us in exploring this complex and important theme at this year's Skoll World Forum.

NEARLY 1,000 PEOPLE FROM 60 COUNTRIES



SHARE YOUR EXPERIENCE WITH THE WORLD BY TWEETING **#SKOLLWF**

LET'S BEGIN

“Start by doing what’s
necessary; then do what’s
possible; and suddenly you
are doing the impossible.”

Saint Francis of Assisi

The 12th Annual Skoll World Forum is brought to you by the
Skoll Foundation in collaboration with the Skoll Centre for Social
Entrepreneurship at the Saïd Business School, University of Oxford.



SKOLL FOUNDATION

Palo Alto, California, USA
Sally Osberg, President and CEO

The Skoll Foundation drives large-scale change by investing in, connecting, and celebrating social entrepreneurs and the innovators who help them solve the world’s most pressing problems. Founded by Jeff Skoll and led by Sally Osberg, the Foundation has invested approximately \$500 million since 1999, including the Skoll Award to 111 social entrepreneurs and 91 organizations across the globe.

www.skollfoundation.org



**SKOLL CENTRE FOR SOCIAL
ENTREPRENEURSHIP**

Saïd Business School,
University of Oxford, UK
Pamela Hartigan, Director

The Skoll Centre is a leading academic entity for the advancement of social entrepreneurship worldwide. We foster innovative social transformation through education, research, and collaboration. The Centre was founded in 2003 with \$7.5 million from the Skoll Foundation, the largest funding received by a business school for an international social entrepreneurship program.

www.skollcentre.org





SOCIAL PROGRESS IMPERATIVE

JOIN THE GLOBAL MOVEMENT FOR SOCIAL PROGRESS
SPI LAB IN THE COURTYARD MARQUEE

Come to the Courtyard Marquee to meet the Social Progress Imperative team and members of the global Social Progress Network. Learn how to use data, networks, and actionable metrics to fuel your work. Since launching just two years ago, the team's Social Progress Index has grabbed media attention, won over scholars and policy-makers, and demonstrated its usefulness to governments, businesses, and civil society. Stop by to find out how to join this growing global movement and join or seed a network where you operate.

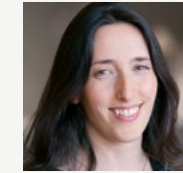


IDEO NETWORKING ACTIVITY

HUMAN-CENTERED DESIGN TO HELP SOLVE YOUTH EMPLOYMENT: A SESSION WITH IDEO.ORG

THURSDAY 3:00–4:30PM, SEMINAR ROOM A, EAST WING

With nearly 75 million young people out of school and out of work, creating new solutions to address youth employment is a critical priority. How do we consider the needs and desires of young people while designing opportunities to help them enter the workforce? What's your solution? In this collaborative conversation, join fellow delegates, facilitators from IDEO.org, and youth employment experts to brainstorm your own approach to specific youth employment challenges.



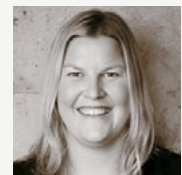
Nathalie Collins
Senior Design Lead,
IDEO.org



Sébastien Marot
Executive Director,
Friends-
International



Steve Cumming
Program Manager,
Youth Learning,
MasterCard
Foundation



Jocelyn Wyatt
Co-Lead and
Executive Director,
IDEO.org



SUNDANCE NETWORKING ACTIVITY

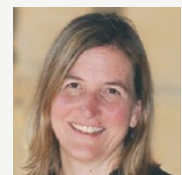
FINDING YOUR STORY AND MAKING IT COUNT: A SESSION WITH SUNDANCE

THURSDAY 3:00–4:30PM, PYRAMID ROOM, WEST WING

We have all witnessed the power of a good story. It can be the determining factor in raising funds, changing behaviors, and making you and your cause memorable. Join the Sundance Institute to explore key elements of narrative storytelling and put those skills to use by sharing your story in small groups. Discover how the most effective storylines create empathy that can lead to action. Group leaders include senior Sundance staff and leading independent filmmakers.



Tabitha Jackson
Director,
Documentary Film
Program and Fund,
Sundance Institute



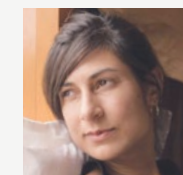
Nicole Newnham
Filmmaker



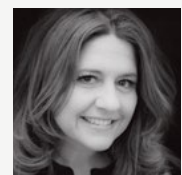
Wendy Levy
Executive Director,
National Alliance
for Media Arts
and Culture



Dawn Porter
Filmmaker,
Trilogy Films



Anjali Nayar
Filmmaker



Cori Shepherd Stern
Principal,
Strongheart Group



FIRST CONNECTIONS

WEDNESDAY 9:00–10:00AM AND 10:00–11:00AM

FOUNDERS' ROOM, EAST WING

THURSDAY AND FRIDAY 8:30–9:30AM

FOUNDERS' ROOM, EAST WING

Kick off your Forum experience with an energetic, facilitated networking session. Think speed dating for social entrepreneurs! This is one of many Forum opportunities to make lasting connections.



BREAKFAST AND NETWORKING

THURSDAY AND FRIDAY 8:00–10:00AM

GARDEN MARQUEE

This time is designed to accommodate breakfast meetings, personal time, or networking with other delegates in the Garden Marquee of Saïd Business School, where a continental breakfast will be served.



GUIDED MEDITATION

THURSDAY AND FRIDAY 8:30–9:30AM

SEMINAR 7, WEST WING

Social change always happens here and now, never yesterday, nor tomorrow. The practice of silent meditation is a direct way to reunite body and mind in the present moment, to realize a harmonious life, and allow us to naturally become the change we want to see in society. The guided morning meditations are an opportunity to practice this together, and prepare yourself for a mindful Skoll World Forum. Open to all, no experience required.





DAY
1

DELEGATE DINNERS

WEDNESDAY STARTS PROMPTLY AT 7:15PM
UNIVERSITY OF OXFORD COLLEGES

Dine with fellow delegates within the hallowed walls of Oxford's oldest and best-known colleges! The University of Oxford has been a seat of learning since the 12th century. Follow an Oxford tradition of connecting with fellow thinkers during an atmospheric evening of dining and conversation. Locate your dinner invitation with your college destination in your badge pack.



DAY
2

SKOLL AWARDS RECEPTION

THURSDAY 7:00–9:00PM

ASHMOLEAN MUSEUM OF ART AND ARCHAEOLOGY

The Skoll Award for Social Entrepreneurship recognizes extraordinary leadership and the proven potential to create large-scale change throughout the world. Help celebrate and honor the 2015 Skoll Awardees in a ceremony at New Theatre, followed by a reception at the Ashmolean Museum of Art and Archaeology, Britain's first public museum. Enjoy drinks and canapés among the ancient exhibits.



DAY
1

AFTER-HOURS PUB NIGHT

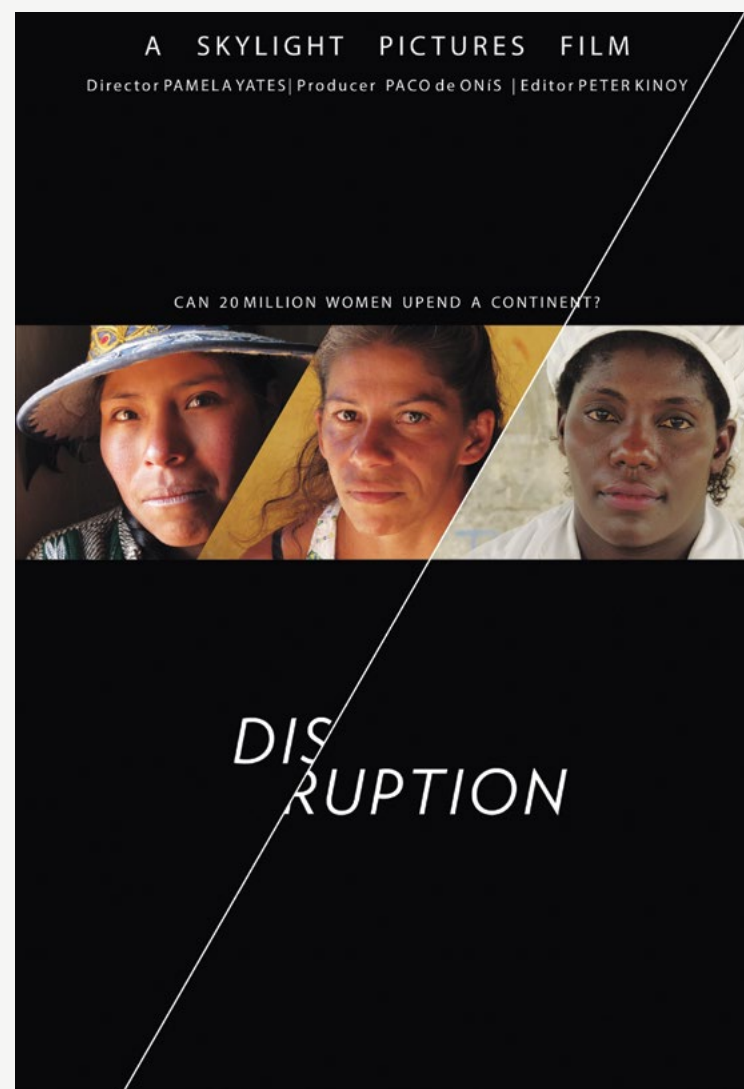
WEDNESDAY 9:30–11:30PM
THE OXFORD RETREAT

Join us at the designated after-hours home base for Skoll World Forum delegates. Catch up on the day's events, enjoy an energetic debate, or sip on a relaxing pint with fellow Forum delegates!



DISRUPTION explores the work of a group of Latin American activist-economists who are pioneering strategies for financial inclusion across the region by aligning policy, market mechanisms, and advances in technology to create programs that place women at the center of the drive for social change. Through

these programs, the women become empowered economic and political agents in their communities. If the model is taken to scale, could 20 million women upend a continent? Panel discussion will follow the screening.



MODERATOR

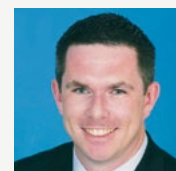


Richard Ray Perez
Producer,
Creative Partnerships,
Sundance Institute

SPEAKERS



Paco de Onís
Executive Director and
Executive Producer,
Skylight



Graham Macmillan
Director, Corporate
Social Responsibility,
Citi



Yves Moury
Founder,
President and CEO,
Fundación Capital



Pamela Yates
Creative Director,
Skylight



HUMANS OF THE FORUM: SHARE YOUR EXPERIENCE WITH THE WORLD!

Share your behind-the-scenes photos, thoughts, and insights online. Keep an eye out for the “Humans of SWF” Selfie Booth and pop in—with a colleague or on your own—any time you feel inspired. We will share them on the Skoll World Forum social media channels, with the caption/tweet of your choosing. Feel free to snap your own photos and share them on Twitter or Instagram using the **#HumansofSWF** hashtag.



DON'T MISS WHAT'S HAPPENING ONLINE!

@skollworldforum

Follow us on Twitter for year-round conversations, debates, and news.

#skollwf

Use the conference hashtag to share what you're seeing and hearing on Twitter, Facebook, and Instagram.

Miss a session?

We'll be posting sessions online and live-streaming plenaries and selected sessions on skollworldforum.org.

Stay connected year-round

Whether you're a social entrepreneur, an investor, or a journalist, get the latest social-sector news summarized in a bite-size email by subscribing to our newsletter at: <http://skollworldforum.org/subscribe>.



@skollworldforum
#skollwf



www.facebook.com/skollworldforum



<http://skollworldforum.org>

Check out the Forum Live page at <http://skollworldforum.org/live> for videos, photos, blogs, and conversations as they happen in real time.



See which organizations and individuals are attending



Build your own schedule



Join delegates-only conversations



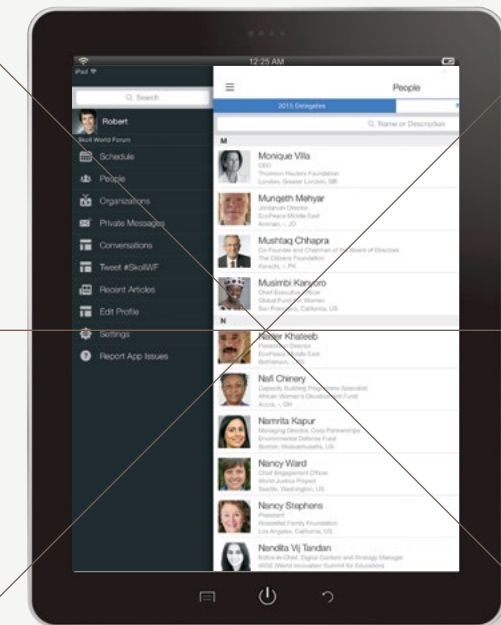
Find delegates with similar interests and expertise



Manage your profile



Read original articles



LEARN, SHARE, AND EXPLORE

SkollWorldForum.org is a year-round platform where you can learn about social entrepreneurs' innovations, news on global issues, and solutions to pressing world problems. As a delegate, you have access to a wide range of features on skollworldforum.org, including delegate contact information, job postings, original articles, delegates-only conversations, and more.

We regularly solicit contributions from the Forum community and partner with some of the world's

leading media institutions to amplify coverage of global issues that matter. Our media partners include Al Jazeera, Christian Science Monitor, CNN, Devex, Forbes, The Guardian, Harvard Business Review, Reuters, the Stanford Social Innovation Review and The Financial Times' *This Is Africa*.

If you'd like to contribute content or become a content partner, please contact our Communications Team at comms@skollfoundation.org.

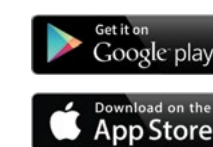
SKOLL WORLD FORUM APP

Download the Skoll World Forum mobile app (available for iOS and Android) to make the most of your experience.

- Access delegates' contact information and bios.
- Find people and organizations by the issue(s), countries, or region(s) they work in.
- Initiate conversations, ask questions, and connect with other delegates.
- Build your own schedule in Oxford.
- Learn more about organizations within the Skoll World Forum community.

To fully use this app you must be a registered delegate. You will receive an email titled "Welcome to the Skoll World Forum on Social Entrepreneurship" from info@skollworldforum.org with information on how to get started.

Scan this QR code to download Skoll World Forum mobile app.



THE CHRISTIAN
SCIENCE MONITOR



deveximpact
Business Transforming Development


Forbes

theguardian



StanfordSOCIAL
INNOVATION REVIEW





“One person with a belief is equal to
ninety-nine who have only interests.”

John Stuart Mill

DAY 1

DAY 1

All activities take place at Saïd Business School unless otherwise indicated.

8:00am			
9:00am	Registration Open 9:00am–5:00pm	First Connections 9:00–10:00am Founders’ Room, East Wing	Walking Tour 9:00–10:30am From Entrance Hall, East Wing
10:00am		First Connections 10:00–11:00am Founders’ Room, East Wing	
11:00am			Walking Tour 10:30am–12:00pm From Entrance Hall, East Wing
12:00pm		Lunch 11:30am–1:00pm Garden Marquee	Lunch: Delegate-Led Discussions 11:45am–1:00pm West Wing <i>See pages 18 to 19</i>
1:00pm			
2:00pm		Seminars 1:30–2:45pm Saïd Business School Lecture Theatres, East Wing <i>See pages 20 to 21</i>	
3:00pm		Seminars 3:00–4:15pm Saïd Business School Lecture Theatres, East Wing <i>See pages 22 to 23</i>	
4:00pm			
5:00pm		Opening Plenary 5:00–6:30pm New Theatre <i>See pages 24 to 25</i>	
6:00pm			
7:00pm		Delegate Dinners 7:15–9:30pm University of Oxford Colleges <i>See page 10</i>	
8:00pm			
9:00pm			
10:00pm		After-Hours Pub Night 9:30–11:30pm The Oxford Retreat <i>See page 11</i>	Sundance Institute Film Screening: Disruption 9:30–11:30pm New Theatre <i>See page 12</i>
11:00pm			
11:30pm			

INTRODUCTIONS

WEDNESDAY

WALKING TOURS

9:00–10:30AM AND 10:30AM–12:00PM
FROM ENTRANCE HALL, EAST WING

Take a tour through the historic center of Oxford. Learn about the University while visiting some of the city’s oldest buildings, grandest dining halls, and most atmospheric chapels, cloisters, and quadrangles.

FIRST CONNECTIONS

9:00–10:00AM AND 10:00–11:00AM
FOUNDERS’ ROOM, EAST WING

Kick off your Forum experience with an energetic, facilitated networking session. Think speed dating for social entrepreneurs! This is one of many Forum opportunities to make lasting connections.



An Ecosystems Approach to Scaling Social Entrepreneurs

CLASSROOM 2, WEST WING

Social entrepreneurs in developing countries play a vital role in advancing innovative solutions to development challenges, but frequently run up against systemic barriers to scale that can't be tackled by a single entity alone. Join a discussion on the role of entrepreneurs, influencers, intermediaries, and the donor community. Learn how they can work together within the greater entrepreneurship ecosystem to address common barriers to scale, thus unlocking the potential of promising social entrepreneurs around the world.

Chris Jurgens
Division Chief of Global Partnerships,
USAID

Global Megatrends: How Does Latin America Fare?

SEMINAR 1, WEST WING

In the last decade, 65 million people entered the middle class in Latin America. Today, social development indices show increasing improvements in the lives of the poor. This discussion will explore political, social, and economic trends to watch in this transformed region as well as evaluate how the region stacks up in these scenarios. To help thought leaders as they navigate these trends and engage with the region, we will also provide a roadmap of opportunities in Latin America.

Natalie Alhonte
Associate Director, Adrienne Arsht Latin America Center,
Atlantic Council

The Rising Tide of Entrepreneurship in MENA

SEMINAR 2, WEST WING

In developed countries, small and medium enterprises (SMEs) produce 60 to 70 percent of all jobs. However, in the Middle East and North Africa, SMEs account for only 30 percent of private sector employment and just four to 16 percent of total employment. In 2010 we launched an initiative in Silicon Valley to transform SMEs into an engine for job growth in the Middle East and North Africa. Companies in our community have provided employment for more than 70,000 people, education for 20,000 students, and helped raise \$1.2 billion in funding for promising initiatives. Meet some of the entrepreneurs that have made it happen.

Ossama Hassanein
Chairman of the Board,
TechWadi

The Future of Social Enterprise, the Future of Impact

SEMINAR 3, WEST WING

Currently, the social impact space is undergoing a radical transformation. Actions taken in the next decade will be pivotal to its success or failure. In 2025, will we be paving avenues of opportunity for people enduring challenging predicaments? Looking back from the future, how will progress against the world's most pressing problems be best measured? A yearlong international research project, including interviews of leading change makers around the world, has yielded intriguing answers to these and other questions.

Pamela Ryan
Chair,
Tingari-Silverton Foundation

Sustainable Sanitation Solutions for Urban Slums

SEMINAR 4, WEST WING

More than 4 billion people in the developing world lack access to sanitation. Of all the millennium development goals, access to sanitation is the most off-track. Urban slums, where populations will double to 2 billion people in the next 15 years, are at the epicenter of the sanitation crisis. What can be done? Come share your ideas and learn about the work of a young social enterprise which builds healthy, prosperous communities in East Africa's urban slums by making hygienic sanitation affordable and accessible for all.

David Auerbach
Co-Founder,
Sanergy

Using Culture to Change Culture

SEMINAR 8, WEST WING

Join an exploration of how to transform cultural norms through the creative and innovative use of media, arts, and technology. Share stories and strategies that advance social justice through unlikely partnerships of cultural creatives, technology innovators, and political organizations. Today, our ability to connect and create new narratives and memes is opening more opportunities to promote a voice for all people. Be prepared to share your experiences, and I'll share mine, in producing music videos, video games, short documentaries, and multi-media campaigns.

Mallika Dutt
Founder and President,
Breakthrough

Mental Health Interventions: Pre- and Post-Disaster

SEMINAR 9, WEST WING

The World Health Organization estimates approximately 260 million people suffer from post-traumatic stress injuries. Globally, mental health services are often inadequate or nonexistent. Innovative interventions are needed to reduce suffering in both children and adults that take into account communal-based cultures and ones that are not psychologically oriented. What interventions can be adapted to different cultures and applied to individuals across their lifespan? Be sure to bring recommendations to discuss with the group.

Elaine Miller-Karas
Co-Founder and Executive Director,
Trauma Resource Insitute

Leveraging New and Old Technologies into Today's Education Models

SEMINAR 10, WEST WING

Innovation in education varies from context to context. New iterations of old technologies have emerged in low-resource settings with success. Examples abound: Literacy projects utilizing SMS, USSD and IVR now reach people in inaccessible areas via mobile phones. Assistive technologies now aid disability centers using neuroscience and robotics. Teachers use homework software to eliminate hours of preparation, distribution, grading, and administration. Come learn what's new and what could work in your specific context.

Alexandra Berrio
CEO,
World Literacy Foundation

WEDNESDAY 1:30–2:45PM

WHAT ARE SEMINARS?

These highly interactive sessions, led by one or two facilitators, provide actionable learning and practical takeaways. Seminars are structured to promote open dialogue and peer-to-peer sharing of best practices.



The Dark Side of M&E

RHODES TRUST LECTURE THEATRE, EAST WING

Great monitoring and evaluation can drive more effective programs and might make the difference between additional funding and a tough financial year. But has the desire for perfect M&E gone too far? Is the constant reach for greater rigor, more studies, and bigger data sets actually having an adverse effect on our sector? In this interactive conversation, drawing upon real experiences, we will surface what isn't openly discussed, explore how the sector's approach to M&E can be improved, and learn how we can positively influence that trend.



FACILITATORS
Andrea Coleman
CEO and Co-Founder,
Riders for Health



Martin Fisher
Co-Founder and CEO,
KickStart-International



Carlos Miranda
Founder and CEO,
I.G. Advisors

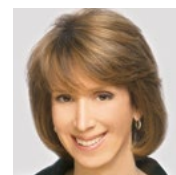


Ehren Reed
Director of Evaluation,
Skoll Foundation

Leveraging Time and Talent for Social Impact

LECTURE THEATRE 5, EAST WING

Organizations are often resource constrained, but lack access to appropriate professionals who want to donate their time and talent. Learn how skills-based volunteering can provide critical resources to help you achieve your mission while offering unique leadership development for volunteers. With 31 percent of companies offering international volunteer initiatives, the time is now to engage these talented individuals just waiting to be asked.



FACILITATOR
Elizabeth Hamburg
President and CEO,
Taproot Foundation

Fighting Poverty, Designing for Happiness

EDMOND SAFRA LECTURE THEATRE, EAST WING

It's not a stretch to say the fight against poverty is a concerted effort to create as much happiness as we can. Otherwise what's the point? While the first step in that fight is rigorous design for impact at scale, the world literature on happiness reveals common themes that cut across cultures. Those themes can serve to tune existing programs and shape the design of new ones toward real, lasting success. Join us as we weave these two seemingly disparate elements into a coordinated approach that can help provide clarity to your mission.

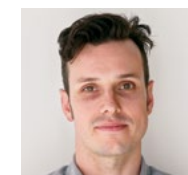


FACILITATOR
Kevin Starr
Director,
Mulago Foundation

Cutting Through the Clutter: Leveraging Media to Get Attention

LECTURE THEATRE 4, EAST WING

Using media to share stories with broad audiences or targeted influencers is critical to gaining credibility in today's media saturated world. How do journalists like to be pitched? What works? What doesn't? How do you navigate the 24-hour news cycle and the latest viral news? Join a veteran journalist and social entrepreneur for a candid conversation about how innovators working for social change can use the media to support their work.



FACILITATORS
Morgan Clendaniel
Editor, Co.Exist,
Fast Company Magazine



Jim Fruchterman
Founder and CEO,
Benetech

Coping, Thriving, and Soaring

SEMINAR ROOM A, EAST WING

We live in demanding times... where there never seems to be enough time. Our focus is consistently facing outward. Rarely do we take the time to look inward. When our negative emotions such as fury, jealousy, and pride take center stage, how can we find inner peace? In contrast, the Mindfulness Revolution is spreading like wildfire. What are its core elements and how can you engage? What is inner peace? How can you find it?



FACILITATOR
Barry Kerzin
Founder,
Altruism in
Medicine Institute

WEDNESDAY 3:00–4:15PM

WHAT ARE SEMINARS?

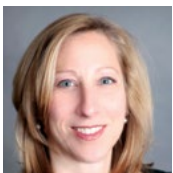
These highly interactive sessions, led by one or two facilitators, provide actionable learning and practical takeaways. Seminars are structured to promote open dialogue and peer-to-peer sharing of best practices.



Building and Coaching Your Team

SEMINAR ROOM A, EAST WING

As you grow, you will likely move from a one-person show to directing an ensemble cast. A critical success factor will be coaching those around you to contribute at their highest potential. By using four personality type dimensions and temperaments, you can focus your natural strengths and inclinations where they bring you greatest satisfaction and the highest value to your mission. Gain an understanding of six basic human needs that underlie the choices people make, and how to use them to elevate your team.



FACILITATOR
Sylvia Hacaj
Advisor,
Dream to Learn, Inc.

The Future of Work

LECTURE THEATRE 5, EAST WING

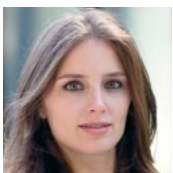
In the next 5 to 10 years, the way we work, live, and lead productive and fruitful lives will change dramatically. We are on the brink of technological innovations that will change how we collaborate, how we build empathy, and how we enable collective change in a global arena. What will this mean for you? Explore how these new ways of working and living in the very near future can help you achieve your personal and professional ambitions. Join us for a sneak peek into the future.



FACILITATORS
David Jones
Executive Producer
and Principal Program
Manager, Microsoft



Ben Knight
Co-Founder,
Loomio



Bettina Warburg
Public Foresight
Strategist,
Institute for the
Future

Taking Your Donors and Fundraising to the Next Level

RHODES TRUST LECTURE THEATRE, EAST WING

Developing good donor relations is critical to successful fundraising. From first engagement to a nurtured relationship over time, cultivating donors well will directly impact fundraising programs. It starts with acquiring the right donors. Who should you target? Where can you find them? What motivates a donor to engage and give? Once acquired, how can you develop your donors and move them up the giving pyramid? We'll introduce strategies for cultivating donors for life, optimizing private fundraising, and the economics of successful donor management.



FACILITATORS
Teresa Guillien
Senior Program Director,
Resource Media



Mark Rhode
Vice President,
Russ Reid

Behavioral Science, Design, and Other Creative Hacks for Enabling Impact

EDMOND SAFRA LECTURE THEATRE, EAST WING

This year, the private sector will spend nearly \$600 billion, triple the entire development aid budget, on triggering you to change a behavior. The hidden architects behind this force—behavioral scientists, designers, and marketers—shape how entire countries think, talk, and act. Yet, rarely are these same experts engaged in the social sector. Come learn their top secrets to enable massive change, as well as new, simple approaches that could dramatically improve your program's impact.

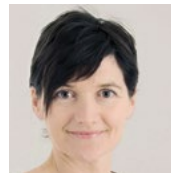


FACILITATOR
Mike Rios
Chief Innovation Officer,
17 Triggers

Click and Tell: Going Viral in a Digital World

LECTURE THEATRE 4, EAST WING

SPOILER ALERT: We can't actually make you go viral. Getting a story to go viral has become the holy grail for digital communicators, yet remains a rare event. We have seen that substantive, issue-based content can rival the success of funny cat videos, in the process garnering millions of views and breaking the stereotype of charity storytelling. But clicks alone won't bring social change or build movements. In this provocative conversation, you'll hear about breakthrough strategies for crafting clickable, shareable messages that create meaningful change.



FACILITATORS
Rachael Clay
Director,
Ethicore



Adam Mordecai
Editor-at-Large,
Upworthy



BELIEF

OPENING PLENARY

WEDNESDAY 5:00–6:30PM, NEW THEATRE

Doors open at 4:30pm. Seating is general admission.

MASTER OF CEREMONIES



Stephan Chambers

Chairman,
Skoll Centre for Social Entrepreneurship;
MBA Director,
Saïd Business School, University of Oxford

BELIEF IN A COLLECTIVE FUTURE: A CONVERSATION



Mabel van Oranje

Chair of the Board of Trustees,
Girls Not Brides



Jeff Skoll

Chairman,
Jeff Skoll Group

PERSPECTIVES ON BELIEF

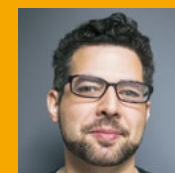


Ophelia Dahl

Executive Director,
Partners In Health



Archbishop Emeritus Desmond M. Tutu



Zak Ebrahim

Author,
The Terrorist's Son: A Story of Choice



Reverend Mpho A. Tutu

Executive Director,
Desmond & Leah Tutu Legacy Foundation



Jacqueline Novogratz

Founder and CEO,
Acumen

MUSICAL PERFORMANCE: MASSUKOS

Almost every successful person begins
with two beliefs: The future can be better than the
present and I have the power to make it so.



DAY
2

DAY 2		All activities take place at Saïd Business School unless otherwise indicated.	
8:00am	Breakfast and Networking 8:00–10:00am Garden Marquee		
9:00am		First Connections 8:30–9:30am Founders’ Room, East Wing	Guided Meditation 8:30–9:30am Seminar 7, West Wing
10:00am	Core Sessions 10:00–11:15am Saïd Business School Lecture Theatres, East Wing <i>See pages 28 to 33</i>		
11:00am			
12:00pm	Lunch 11:30am–1:00pm Garden Marquee	Lunch: Core Sessions 11:45am–1:00pm West Wing <i>See pages 34 to 35</i>	Lunch: Delegate-Led Discussions 11:45am–1:00pm West Wing <i>See pages 36 to 37</i>
1:00pm			
2:00pm	Core Sessions 1:15–2:30pm Saïd Business School Lecture Theatres, East Wing <i>See pages 38 to 43</i>		
3:00pm	Networking Activities 3:00–4:30pm IDEO.org: Seminar Room A, East Wing Sundance: Pyramid Room, West Wing <i>See page 27</i>		
4:00pm			
5:00pm			
6:00pm	Skoll Awards for Social Entrepreneurship 5:30–7:00pm New Theatre <i>See pages 44 to 45</i>		
7:00pm	Skoll Awards Reception 7:00–9:00pm Ashmolean Museum of Art and Archaeology		
8:00pm			
9:00pm			
10:00pm			
11:00pm			
11:30pm			

NETWORKING

THURSDAY

BREAKFAST AND NETWORKING

8:00–10:00AM

GARDEN MARQUEE

This time is designed to accommodate breakfast meetings, personal time, or networking with other delegates in the Garden Marquee of Saïd Business School, where a continental breakfast will be served.

FIRST CONNECTIONS

8:30–9:30AM

FOUNDERS’ ROOM, EAST WING

Enhance your Forum experience with an energetic, facilitated networking session. Think speed dating for social entrepreneurs! This is one of many Forum opportunities to make lasting connections.

GUIDED MEDITATION

8:30–9:30AM

SEMINAR 7, WEST WING

Social change always happens here and now, never yesterday, nor tomorrow. The practice of silent meditation is a direct way to reunite body and mind in the present moment, to realize a harmonious life, and allow us to naturally become the change we want to see in society. The guided morning meditations are an opportunity to practice this together, and prepare yourself for a mindful Skoll World Forum. Open to all, no experience required.

IDEO.ORG NETWORKING ACTIVITY

HUMAN-CENTERED DESIGN TO HELP SOLVE YOUTH EMPLOYMENT: A SESSION WITH IDEO.ORG

3:00–4:30PM

SEMINAR ROOM A, EAST WING

With nearly 75 million young people out of school and out of work, creating new solutions to address youth employment is a critical priority. How do we consider the needs and desires of young people while designing opportunities to help them enter the workforce? What’s your solution? In this collaborative conversation, join fellow delegates, facilitators from IDEO.org, and youth employment experts to brainstorm your own approach to specific youth employment challenges.

SUNDANCE NETWORKING ACTIVITY

FINDING YOUR STORY AND MAKING IT COUNT: A SESSION WITH SUNDANCE

3:00–4:30PM

PYRAMID ROOM, WEST WING

We have all witnessed the power of a good story. It can be the determining factor in raising funds, changing behaviors, and making you and your cause memorable. Join the Sundance Institute to explore key elements of narrative storytelling and put those skills to use by sharing your story in small groups. Discover how the most effective storylines create empathy that can lead to action. Group leaders include senior Sundance staff and leading independent filmmakers.

WHAT ARE CORE SESSIONS?

Innovative disruptions.
Diverse points of view.
Global scale.

These attributes comprise the critical discussions, debates, and dialogue that define Skoll World Forum core sessions. Solution-oriented topics set the stage for collective action and progress on some of the world’s greatest challenges.



SESSION BLOCK 1 AT A GLANCE

The Great Paradigm Shift

NELSON MANDELA LECTURE THEATRE, EAST WING

MODERATOR

Michael Green

SPEAKERS

Paul Farmer, Diana Good, Eduarda la Rocque, Michael Porter

The Story of Change: Revolution Begins in the Imagination

EDMOND SAFRA LECTURE THEATRE, EAST WING

MODERATOR

Jess Search

SPEAKERS

Charmian Gooch, Dawn Porter, Carne Ross, Pamela Yates

Bringing In Big Money: Innovative Financing Meets Inclusive Business

RHODES TRUST LECTURE THEATRE, EAST WING

MODERATOR

Robert Annibale

SPEAKERS

Elizabeth Littlefield, Charlotte Oades, Peter Tufano

Down is Not Defeated

LECTURE THEATRE 4, EAST WING

MODERATOR

Diana Aviv

SPEAKERS

Ned Breslin, Cecilia Flores-Oebanda, Kennedy Odede, Lola Young

India at the Crossroads

LECTURE THEATRE 5, EAST WING

MODERATOR

Neera Nundy

SPEAKERS

Rikin Gandhi, Tim Hanstad, Rohini Nilekani

The Great Paradigm Shift

NELSON MANDELA LECTURE THEATRE, EAST WING

The last 50 years have been dominated by the idea that economic growth is the most direct route to better lives for the world’s expanding population. But the signs are everywhere—environmental destruction, inequality, injustice—that economic development alone is not enough. What is a framework for the next 50 years? Join one of the world’s leading business thinkers, Professor Michael Porter, in a dialogue with social entrepreneurs and government innovators about creating a new paradigm in which economic development is the servant of social progress, not vice versa.

Continue the discussion at
<http://skoll.wf/swf16101>

MODERATOR



Michael Green

Executive Director,
Social Progress Imperative

SPEAKERS



Paul Farmer

Co-Founder,
Partners In Health



Diana Good

Commissioner,
Independent Commission
for Aid Impact



Eduarda La Rocque

President,
Municipal Pereira
Passos Institute



Michael Porter

Bishop William Lawrence
University Professor,
Harvard Business School



Build Your Schedule:
Use “Scan QR” from
the Skoll World
Forum mobile app
to add this session.

THURSDAY 10:00–11:15AM

The Story of Change: Revolution Begins in the Imagination

EDMOND SAFRA LECTURE THEATRE, EAST WING

How does change happen? There is a growing body of work that argues the old top-down leader-driven models have failed. How do we encourage change from the people, by the people, and for the people? What new role should leaders play in the leaderless revolution? And if liberation begins in the mind, what is the role of the storyteller? This panel unites Skoll social entrepreneurs with Sundance filmmakers to tackle these big questions.

Continue the discussion at <http://skoll.wf/swf16102>

MODERATOR



Jess Search
CEO,
BRITDOC Foundation

SPEAKERS



Charmian Gooch
Director and Co-Founder,
Global Witness



Dawn Porter
Filmmaker,
Trilogy Films



Carne Ross
Executive Director,
Independent Diplomat



Pamela Yates
Creative Director,
Skylight



Build Your Schedule:
Use “Scan QR” from
the Skoll World
Forum mobile app
to add this session.

Bringing In Big Money: Innovative Financing Meets Inclusive Business

RHODES TRUST LECTURE THEATRE, EAST WING

Finance is needed to fuel social change. Yet innovative financing—whether it is philanthropic or seeks a return—is not financial innovation. Invested in the right way and at the right time, capital can help address increasingly complex and interconnected social, environmental, and economic challenges—while drawing on the intentionality and other non-monetary resources of private and public sector players. This panel will explore green shoots of innovative financing that can scale, share risk, and distribute benefits more equitably. How can we encourage and proliferate such collaborations—especially at a time when innovative solutions need them most?

Continue the discussion at <http://skoll.wf/swf16103>

MODERATOR



Robert Annibale
Global Director of Inclusive Finance,
Citi

SPEAKERS



Elizabeth Littlefield
President and CEO,
Overseas Private Investment Corporation



Charlotte Oades
Global Director,
Women’s Economic Empowerment,
The Coca-Cola Company



Peter Tufano
Peter Moores Dean,
Saïd Business School



Build Your Schedule:
Use “Scan QR” from
the Skoll World
Forum mobile app
to add this session.

THURSDAY 10:00–11:15AM

Down is Not Defeated

LECTURE THEATRE 4, EAST WING

Every great leader has known challenges and hardships... personally, professionally, or both. The human emotions of loss, self-doubt, isolation, and fear know no boundaries of geography or income. But neither does the human spirit. Leaders who tap their deeper sense of purpose often discover strength, capacity, and perspective that can ultimately lead them to their greatest achievements. Come learn about resilience and belief in yourself first-hand from those who learned to overcome adversity despite the odds.

Continue the discussion at <http://skoll.wf/swf16104>

MODERATOR



Diana Aviv
President and CEO,
Independent Sector

SPEAKERS



Ned Breslin
CEO,
Water For People



Cecilia Flores-Oebanda
Founding President and Executive Director,
Visayan Forum Foundation



Kennedy Odede
President and CEO,
Shining Hope for Communities



Lola Young
Baroness,
House of Lords



Build Your Schedule:
Use "Scan QR" from
the Skoll World
Forum mobile app
to add this session.

India at the Crossroads

LECTURE THEATRE 5, EAST WING

India is clearly at an inflection point. There is global momentum, true economic incentives, and real desire to achieve social and economic progress in this evolving country. Social entrepreneurs and funders looking to work in India however, face a unique operating environment: rapid modernization, lingering poverty, regional and religious distinctions, urban and rural differences, complex laws that vary state by state, and competition with millions of NGOs. The key to success has been identifying local staff and partners to help navigate this tricky landscape. Come engage with people and organizations working to create new opportunities in, and for, India.

Continue the discussion at <http://skoll.wf/swf16105>

MODERATOR



Neera Nundy
Co-Founder and Managing Partner,
Dasra

SPEAKERS



Rikin Gandhi
CEO,
Digital Green



Tim Hanstad
President and CEO,
Landesa



Rohini Nilekani
Chairperson,
Arghyam



Build Your Schedule:
Use "Scan QR" from
the Skoll World
Forum mobile app
to add this session.



LUNCH: CORE SESSIONS

THURSDAY 11:45AM–1:00PM

Grab lunch from the Garden Marquee and choose between the following lunchtime options:

CORE SESSIONS

Attend one of two core sessions for a deep panel discussion, followed by interactive Q&A.

DELEGATE-LED DISCUSSIONS

Join an intimate, peer-to-peer discussion facilitated by a Skoll World Forum delegate.

CORE LUNCH SESSION

Beyond Better: How Do We Know We're Changing the Status Quo?

PYRAMID ROOM, WEST WING

Every once in a while, backed by revolutionary thinking and hard work, society moves forward to a fundamentally new, and more equitable condition. The existing equilibrium is left behind—even if it held for centuries, locked in place by entrenched and powerful forces. Come hear from extraordinary thinkers and entrepreneurs, who are driving the shift to a more just and sustainable social equilibrium.

Continue the discussion at
<http://skoll.wf/swf16111>

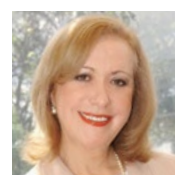
MODERATOR



Jeff Kehoe

Senior Editor,
Harvard Business Review Press,
Harvard Business Review

SPEAKERS



Vicky Colbert

Founder and Director,
Fundación Escuela Nueva



Bill Drayton

Founder and CEO,
Ashoka



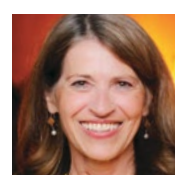
Roger Martin

Academic Director,
Martin Prosperity Institute



Nandan Nilekani

Chairman,
EkStep



Sally Osberg

President and CEO,
Skoll Foundation



Build Your Schedule:
Use "Scan QR" from
the Skoll World
Forum mobile app
to add this session.

CORE LUNCH SESSION

Expect the Unexpected: Building in Plan B

LECTURE THEATRE 6, WEST WING

To maximize impact for a film, a book, or an article in an information-heavy world, increasingly content creation and distribution/engagement planning are becoming integrated. But what we set out to achieve and what actually happens may include surprises—from unexpected successes to unforeseen backlash. As social entrepreneurs embrace storytelling as a tool for driving social change, what can we learn from those who have led the charge in charting the integration of creative storytelling with strategic engagement campaigns?

Continue the discussion at
<http://skoll.wf/swf16112>

MODERATOR



Cara Mertes

Director, JustFilms,
Ford Foundation

SPEAKERS



David Bornstein

CEO,
Solutions Journalism Network



Jenny Bowen

Founder and CEO,
Half the Sky Foundation



Orlando von Einsiedel

Co-Founder,
Grain Media



Build Your Schedule:
Use "Scan QR" from
the Skoll World
Forum mobile app
to add this session.

Building Partnerships for Impact at Scale

CLASSROOM 2, WEST WING

Partnerships are critical to scaling-up social impact. Yet corporations and social innovators often struggle to establish sustainable partnerships. This seminar will focus on connecting diverse partners, aligning goals, and successfully scaling-up impact across markets. Drawing on research from the Fletcher School at Tufts University, we will explore case studies to understand how companies and NGOs can collaborate to reach common goals.

Bhaskar Chakravorti
Senior Associate Dean of International Business & Finance, The Fletcher School at Tufts University

Delivering Water’s Promise: Getting People the Water They Need

SEMINAR 1, WEST WING

Water is central to escaping poverty. At present, there is a fundamental disconnect between the way people living in poverty use water and the way policymakers and water sector architects design and deliver water services. How can social entrepreneurs and innovators help get people the water they need to live healthier, more productive lives and sustain the environment?

Mary Renwick
Director, Water Innovation Program, Winrock International

The Resilience Exchange: Accelerating Social Change

SEMINAR 2, WEST WING

What if it was easy and rewarding to discover, share, and repurpose solutions that social entrepreneurs and others are creating all over the world? Join us to explore how the Rockefeller Foundation collaborates with a group of social change organizations on a platform designed specifically to achieve those aims. Experience the “solutioning” approach first hand and take home ideas for tackling your current challenges.

Nancy Kete
Managing Director (Global Resilience), Rockefeller Foundation

Every Child in School and Learning Well: A Call to Action

SEMINAR 3, WEST WING

A decade ago Pratham, the largest educational movement in India, proved that ordinary citizens can transform the conversation around education by conducting simple reading and math assessments across the country. This annual exercise not only identified gaps in basic learning but also led to national debates to seek solutions. Assessment was the first step to action. Organizations in eight countries have been inspired to do similar assessments. Learn how to join us on this journey to ensure every child is in school and learning well.

Madhav Chavan
Co-Founder and CEO, Pratham

In Search of the Holy Grail: Evaluating for Impact

SEMINAR 4, WEST WING

Demonstrable impact is the elusive goal for social entrepreneurs and researchers alike. Yet, despite the proliferation of programs aimed at addressing large-scale social problems, there is little high-quality evidence of their effectiveness. In this session, a leading methodologist in complex social interventions will engage participants on current methods for evaluating impact. This will be followed by an open discussion on barriers and opportunities for making quality evaluation research the domain of all practitioners.

Fred Hersch
Research Fellow, The George Institute for Global Health

The Path from Innovation to Impact in Global Health

SEMINAR 8, WEST WING

In recent years an explosion of nascent technologies aspired to improve the lives of millions of underserved people around the world. But many of these technologies fall short of reaching their intended beneficiaries, producing sustainable results, or getting beyond the pilot phase. Why is this the case, and how do we change it? This conversation sets out to explore practical solutions to overcoming barriers that prevent new health innovations from achieving their desired impact.

Priya Agrawal
Executive Director, Merck for Mothers

The Promise of Social Entrepreneurship in Emerging Markets

SEMINAR 9, WEST WING

Social entrepreneurship has been around for decades. But is it meeting its goals as a mechanism for improving the lives of the poor in emerging markets? Have we found the right financial, capacity development, and policy tools to unlock its potential? Some would say no—and that’s the problem. Others would say that it’s destined to remain a niche strategy, limited to certain sectors and certain countries. Let’s meet to discuss the challenges and opportunities for emerging-market social entrepreneurship.

Randall Kempner
Executive Director, Aspen Network of Development Entrepreneurs

Moving Beyond the “Like” Button

SEMINAR 10, WEST WING

Today, journalists are better than ever at tapping far-flung sources and moving audiences with powerful writing, audio, video, and graphics. Yet even news organizations that offer little more than a comment box or like button to those who are moved by a story, agree the issue is important and want to do something more meaningful. Some newsrooms are using their investigative skills to help online audiences find pathways that lead from consuming the news to taking action. In this conversation, we’ll look at the efforts and ethics of moving engagement beyond the like button.

Michael Skoler
VP Interactive Media, Public Radio International

WHAT ARE CORE SESSIONS?

Innovative disruptions.
Diverse points of view.
Global scale.

These attributes comprise the critical discussions, debates, and dialogue that define Skoll World Forum core sessions. Solution-oriented topics set the stage for collective action and progress on some of the world’s greatest challenges.



SESSION BLOCK 2 AT A GLANCE

Zero Carbon the Climate Justice Way

NELSON MANDELA LECTURE THEATRE, EAST WING

MODERATOR

Ion Yadigaroglu

SPEAKERS

Tasso Azevedo, Jeremy Grantham, Sir David King, Mary Robinson

When Beliefs Collide: Religion, Geopolitics, and Power

EDMOND SAFRA LECTURE THEATRE, EAST WING

MODERATOR

Gemma Mortensen

SPEAKERS

Gidon Bromberg, Matthew Lawrence, Carne Ross, Karen Tse

Never Again? The Ebola Epidemic’s Warning About Critical Infrastructure Gaps

RHODES TRUST LECTURE THEATRE, EAST WING

MODERATOR

Rich Besser

SPEAKERS

Anthony Banbury, Paul Farmer, Miatta Gbanya, Eric Goosby

Global Development: What Should We Focus On and How Will We Measure Success?

LECTURE THEATRE 4, EAST WING

MODERATOR

Pamela Hartigan

SPEAKERS

Patrick Awuah, Tomas Anker Christensen, Michael Green, Bjorn Lomborg, Bunker Roy, Dorothy Stoneman

Supplier Capacity Development: Moving from Enforcers to Partners

LECTURE THEATRE 5, EAST WING

MODERATOR

Dan Rees

SPEAKERS

Aron Cramer, Michael Kobori, Louise Nicholls, Nina Smith

Zero Carbon the Climate Justice Way

NELSON MANDELA LECTURE THEATRE, EAST WING

As we move “from Lima to Paris,” this moment in time offers unique opportunities in the fight for climate justice. Many countries need access to clean energy to achieve their development goals and lift people out of poverty. Others need clean energy solutions to power the transition from fossil-fuel-based consumption. What moral dimensions frame the relationship between the developed and developing world with regard to development and access to energy? How do we accelerate the pace at which countries at all levels of development participate in the transition to zero carbon by 2050? Join climate justice leaders for a conversation about the sustainable development goals, equality, and progress.

Continue the discussion at
<http://skoll.wf/swf1611>

MODERATOR



Ion Yadigaroglu
Managing Principal and Co-Founder,
Capricorn Investment Group

SPEAKERS



Tasso Azevedo
Socio Environmental Entrepreneur,
Climate Observatory/Avina Foundation



Jeremy Grantham
Co-Founder and
Chief Investment Strategist,
Grantham Foundation for
the Protection of the Environment



Sir David King
Foreign Secretary’s Special
Representative for Climate Change,
Foreign and Commonwealth Office



Mary Robinson
President,
Mary Robinson Foundation—
Climate Justice



Build Your Schedule:
Use “Scan QR” from
the Skoll World
Forum mobile app
to add this session.

THURSDAY 1:15–2:30PM

When Beliefs Collide: Religion, Geopolitics, and Power

EDMOND SAFRA LECTURE THEATRE, EAST WING

Do the ideological battles of our time reflect deep religious conflicts or a collision of underlying beliefs? What is the threat posed by groups such as ISIS and Boko Haram? Where are the wellsprings of positive spiritual leadership? Religious constructs and their organizations have been the source of personal meaning and motivation for billions of people throughout the ages. These same belief systems have also activated extreme prejudice—preventing social progress and destabilizing communities throughout the world. As we strive to create global peace and security, what is the impact of this collision and how can we look beyond divisions to points of progress and hope?

Continue the discussion at <http://skoll.wf/swf1612>

MODERATOR



Gemma Mortensen
Executive Director,
Crisis Action

SPEAKERS



Gidon Bromberg
Israeli Director,
EcoPeace Middle East



Matthew Lawrence
Director of Programmes,
Tony Blair Faith Foundation



Carne Ross
Executive Director,
Independent Diplomat



Karen Tse
Founder and CEO,
International Bridges to Justice



Build Your Schedule:
Use “Scan QR” from
the Skoll World
Forum mobile app
to add this session.

Never Again? The Ebola Epidemic’s Warning About Critical Infrastructure Gaps

RHODES TRUST LECTURE THEATRE, EAST WING

The Ebola epidemic reminded us that global health is only as secure as its weakest link. Despite knowledge of the disease and how to fight it, health experts, West African countries, and the international community were unprepared and unable to properly respond. Factors that exacerbated the outbreak are very familiar to fragile, developing nations: limited communication, poor roads and transportation, strained human resources, lack of policies and protocol, and an absence of supplies and equipment. Focusing on the role of infrastructure in crisis prevention and response, we will issue a call to action to developing countries and the international community.

Continue the discussion at <http://skoll.wf/swf1613>

MODERATOR



Rich Besser
Chief Health and Medical Editor,
ABC News

SPEAKERS



Anthony Banbury
Special Representative
of the Secretary General,
United Nations



Paul Farmer
Co-Founder,
Partners In Health



Miatta Gbanya
Health Sector Pool Fund Manager, Deputy
Incident Manager—Ebola Response,
Ministry of Health and Social Welfare,
Liberia



Eric Goosby
Director,
Global Health Delivery & Diplomacy,
UCSF Global Health Sciences



Build Your Schedule:
Use “Scan QR” from
the Skoll World
Forum mobile app
to add this session.

THURSDAY 1:15–2:30PM

Global Development:
What Should We Focus On and
How Will We Measure Success?

LECTURE THEATRE 4, EAST WING

The urgent need to address social issues has driven numerous attempts to frame, prioritize, and measure development efforts. While these initiatives play a vital role in driving dialogue, channeling resources, and catalyzing action, they are often fraught with controversy and tension—particularly between top down and bottom up constituencies. Join leaders at the forefront of the most prominent global initiatives to prioritize and measure progress, along with social innovators who are working on the frontlines. Expect candid dialogue on how these efforts help, how they harm, and how they can be improved.

Continue the discussion at
<http://skoll.wf/swf1614>

MODERATOR



Pamela Hartigan
Director,
Skoll Centre for
Social Entrepreneurship

SPEAKERS



Patrick Awuah
Founder and President,
Ashesi University



Tomas Anker Christensen
Senior Advisor for Partnerships in the
Executive Office of the Secretary-General,
United Nations



Michael Green
Executive Director,
Social Progress Imperative



Bjorn Lomborg
Director,
Copenhagen Consensus Centre



Bunker Roy
Founder and Director,
Barefoot College



Dorothy Stoneman
Founder and CEO,
YouthBuild USA



Build Your Schedule:
Use “Scan QR” from
the Skoll World
Forum mobile app
to add this session.

Supplier Capacity Development:
Moving from Enforcers
to Partners

LECTURE THEATRE 5, EAST WING

The current state of affairs—auditing, codes of conduct and presenting the business case to suppliers—has yet to bring sustainable change to supply chain sourcing. We all know that actually changing the business practice of suppliers requires more than platitudinous statements of commitment. Come help examine how companies and social entrepreneurs have implemented on-the-ground programs that have won the hearts and minds of suppliers and brought about transformational change in business practices.

Continue the discussion at
<http://skoll.wf/swf1615>

MODERATOR



Dan Rees
Director of Better Work,
International Labour Organization

SPEAKERS



Aron Cramer
President and CEO,
BSR



Michael Kobori
Vice President, Sustainability,
Levi Strauss & Co.



Louise Nicholls
Head of Responsible Sourcing,
Packaging and Plan A,
Marks & Spencer



Nina Smith
Executive Director,
GoodWeave



Build Your Schedule:
Use “Scan QR” from
the Skoll World
Forum mobile app
to add this session.



SKOLL AWARDS

FOR SOCIAL ENTREPRENEURSHIP

THURSDAY 5:30–7:00PM
NEW THEATRE

Doors open at 5:00pm. Seating is general admission.
Followed by Awards Reception at the
Ashmolean Museum of Art and Archaeology from 7:00–9:00pm.

MASTERS OF CEREMONIES

Sally Osberg
President and CEO, Skoll Foundation

Jeff Skoll
Chairman, Jeff Skoll Group

2015 SKOLL AWARDS FOR SOCIAL ENTREPRENEURSHIP

Jagdeesh Rao Puppala
Foundation for Ecological Security

Ma Jun
Institute of Public and Environmental Affairs

Safeena Husain
Educate Girls

Alasdair Harris
Blue Ventures

SKOLL GLOBAL TREASURE AWARD

Graça Machel
Graça Machel Trust

MUSICAL PERFORMANCE: SOWETO GOSPEL CHOIR

2015 SKOLL AWARDS FOR SOCIAL ENTREPRENEURSHIP

JAGDEESH RAO PUPPALA

FOUNDATION FOR
ECOLOGICAL SECURITY

Securing common land ensures a better future for the rural poor

In India, many poor rural communities rely on publicly owned lands for their food and livelihood. Yet these lands have been managed poorly, leading to degradation and exploitation. Jagdeesh Rao Puppala has long promoted the idea that the wellbeing of rural communities depends on the balance of social and ecological systems. The Foundation for Ecological Security (FES) helps villagers secure community rights to publicly owned land and support regulations to manage it in a more sustainable and productive way. The result of this collaborative work has been higher-quality soil, water, and biodiversity, leading to improved agricultural productivity and economic security for the rural poor. To date, FES has secured community rights to nearly 4 million acres of land in India, providing communities a solid foundation on which to build local democracies, sustainable livelihoods, and better futures.



MA JUN

INSTITUTE OF PUBLIC
AND ENVIRONMENTAL
AFFAIRS

Lifting the veil on pollution

Rapid economic progress in China has come at a steep cost—severe degradation of the environment. In the past, communities had no way to track or report industrial pollution. Ma Jun addressed this gap by creating tools for people to access information about the land, air, and water around them using existing government data. This has led to increased public participation in environmental governance, resulting in nearly 2,000 factories taking action to clean up their operations. The Institute of Public and Environmental Affairs (IPE) also promotes sustainable global supply chains by getting large corporations and multinationals like Apple, Hewlett Packard, H&M, and Gap to monitor the environmental performance of their suppliers. This innovative, encompassing approach to transparency allows people in China to play a central role in improving the health of their communities, and helps people around the world make environmentally responsible consumer decisions.





SAFEENA HUSAIN

EDUCATE GIRLS

Investing in the promise of girls

In recent years India has enacted policies and invested in girls' education, resulting in dramatic gains in access to education. However, in many areas, community expectations and accountability for educating girls remain low—a majority of girls do not complete their primary education. Safeena Husain founded Educate Girls to ensure that girls in India's most marginalized rural communities are able to achieve their full potential. Educate Girls partners with public schools; trains local champions for girls' education; and mobilizes communities to create their own action plans to make education more accessible and accountable to girls. Since 2007, Educate Girls has grown from a 50-school pilot project into a large-scale effort reaching 1 million children in 7,500 schools. With plans to achieve even greater scale over the next few years, Educate Girls is preparing a generation of young women to enter the formal economy and help lift their families out of poverty.

ALASDAIR HARRIS

BLUE VENTURES

Building sustainable coastal communities

Ten years ago in a coastal village in Madagascar, Alasdair Harris tested an elegantly simple model that put Blue Ventures on the map. He encouraged residents to take charge of their local fishery by cordoning off a small section of their octopus-fishing area for a designated period of time. When the area was re-opened, the community saw huge increases in their catch and incomes. Building on this success, local communities created Madagascar's first local committee to manage and conserve marine resources. Since that auspicious start, Blue Ventures has helped replicate this model along thousands of miles of coastline along the Indian Ocean. Beyond managing fisheries, Blue Ventures has integrated family planning and health services into its livelihoods and conservation work, showing the world that protecting the ocean can and should go hand-in-hand with improving lives.



SKOLL GLOBAL TREASURE AWARD



GRAÇA MACHEL GRAÇA MACHEL TRUST

Graça Machel is an advocate for women, children, and communities affected by injustice. She was a freedom fighter and schoolteacher before being named Mozambique's first Education Minister. After leaving the Ministry, Machel produced a groundbreaking report on the impact of armed conflict on children that changed the way the UN responds in conflict zones.

Machel is a founding member of The Elders, and helped establish Girls Not Brides. She is the Board Chair of the Partnership for Maternal, Newborn & Child Health; African Ambassador for A Promise Renewed; and President of the Foundation for Community Development.

As founder of the Graça Machel Trust, she advocates for women's economic empowerment, education, an end to child marriage, food security and nutrition, and democracy and good governance. Machel has been recognized for her work on the Africa Progress Panel, the Millennium Development Goals, and the High-Level Panel on the Post-2015 Development Agenda.

Graça Machel has dedicated her life to improving lives and building a more equitable world for us all.

DAY 3

DAY 3

All activities take place at Saïd Business School unless otherwise indicated.

8:00am	Breakfast and Networking 8:00–10:00am Garden Marquee		
9:00am		First Connections 8:30–9:30am Founders' Room, East Wing	Guided Meditation 8:30–9:30am Seminar 7, West Wing
10:00am	Core Sessions 10:00–11:15am Saïd Business School Lecture Theatres, East Wing <i>See pages 52 to 57</i>		
11:00am			
12:00pm	Lunch 11:30am–1:00pm Garden Marquee	Lunch: Core Session 11:45am–1:00pm Lecture Theatre 6, West Wing <i>See pages 58 to 59</i>	Lunch: Delegate-Led Discussions 11:45am–1:00pm West Wing <i>See pages 60 to 61</i>
1:00pm	Core Sessions 1:15–2:30pm Saïd Business School Lecture Theatres, East Wing <i>See pages 62 to 66</i>		
2:00pm			
3:00pm			
4:00pm	Closing Plenary 3:30–5:00pm New Theatre <i>See pages 68 to 69</i>		
5:00pm			
6:00pm			
7:00pm			
8:00pm			
9:00pm			
10:00pm			
11:00pm			
11:30pm			

NETWORKING

FRIDAY

BREAKFAST AND NETWORKING

8:00–10:00AM

GARDEN MARQUEE

This time is designed to accommodate breakfast meetings, personal time, or networking with other delegates in the Garden Marquee of Saïd Business School, where a continental breakfast will be served.

FIRST CONNECTIONS

8:30–9:30AM

FOUNDERS' ROOM, EAST WING

Enhance your Forum experience with an energetic, facilitated networking session. Think speed dating for social entrepreneurs! This is one of many Forum opportunities to make lasting connections.

GUIDED MEDITATION

8:30–9:30AM

SEMINAR 7, WEST WING

Social change always happens here and now, never yesterday, nor tomorrow. The practice of silent meditation is a direct way to reunite body and mind in the present moment, to realize a harmonious life, and allow us to naturally become the change we want to see in society. The guided morning meditations are an opportunity to practice this together, and prepare yourself for a mindful Skoll World Forum. Open to all, no experience required.



WHAT ARE CORE SESSIONS?

Innovative disruptions.
Diverse points of view.
Global scale.

These attributes comprise the critical discussions, debates, and dialogue that define Skoll World Forum core sessions. Solution-oriented topics set the stage for collective action and progress on some of the world’s greatest challenges.



SESSION BLOCK 3 AT A GLANCE

Unleashing Girls’ Power

NELSON MANDELA LECTURE THEATRE, EAST WING

MODERATOR
Mabel van Oranje

SPEAKERS
Memory Banda, Lucy Lake, Graça Machel, Rebecca Winthrop

Hot Topics: The Fine Line Between Informing and Shaping Public Opinion

EDMOND SAFRA LECTURE THEATRE, EAST WING

MODERATOR
Sandy Herz

SPEAKERS
Sarah Just, Solomon Muger, Madhulika Sikka, Ray Suarez

Funding Impact at Scale Through Market Segmentation

RHODES TRUST LECTURE THEATRE, EAST WING

MODERATOR
Andrew Stern

SPEAKERS
Debbie Aung Din Taylor, Dana Hovig, Sam Parker

Cities: Engines of Transformational Change

LECTURE THEATRE 4, EAST WING

MODERATOR
Emily Kasriel

SPEAKERS
Benjamin Barber, Rodrigo Guerrero, Alessandra Orofino, Sue Riddlestone

How Fast Can Small Grow? The Case for Solar Power

LECTURE THEATRE 5, EAST WING

MODERATOR
Aimée Christensen

SPEAKERS
Harish Hande, Xavier Helgesen, Danny Kennedy, Qi Ye, Stuart Rolland, Dipender Saluja,

Unleashing Girls’ Power

NELSON MANDELA LECTURE THEATRE, EAST WING

For many, the immense benefit of empowering girls is clear: Increased future incomes, delayed marriage, improvements in personal and family health, and untold benefits for society overall. Educating girls has proven one of the most effective ways to realize those gains, and the impact of educating girls at the primary level is quickly becoming a global success story. But what comes after? Adolescence is a crucial, formative period in a girl’s life. The constant threat of poverty, child marriage, lack of effective secondary education, and the continuing low status of girls and women are severely hampering gains made earlier in life. How can we help realize an ever-greater success story?

Continue the discussion at
<http://skoll.wf/swf17101>

MODERATOR



Mabel van Oranje
Chair of the Board of Trustees,
Girls Not Brides

SPEAKERS



Memory Banda
Let Girls Lead Representative,
Girls Empowerment Network



Lucy Lake
CEO,
Campaign for Female Education



Graça Machel
Founder,
Graça Machel Trust



Rebecca Winthrop
Director,
Center for Universal Education,
Brookings Institution



Build Your Schedule:
Use “Scan QR” from
the Skoll World
Forum mobile app
to add this session.

FRIDAY 10:00–11:15AM

Hot Topics: The Fine Line Between Informing and Shaping Public Opinion

EDMOND SAFRA LECTURE THEATRE, EAST WING

Join leading global media executives and journalists in a lively discussion about news stories that drove headlines this past year and how the media chose to cover them. How do media outlets decide what to include? What information is selected to stay out? During intense coverage, do the media strike the right balance with objective reporting, or are they disproportionately driving public perception about an issue? Expect topics to range from the current challenges in Ukraine, to the next infectious disease in Africa, fallout from the Charlie Hebdo massacre, the continued Boko Haram kidnappings, and suggestions from the crowd.

Continue the discussion at <http://skoll.wf/swf17102>

MODERATOR



Sandy Herz
Director of Global Partnerships,
Skoll Foundation

SPEAKERS



Sarah Just
Executive Producer,
PBS NewsHour



Solomon Mugera
Editor, BBC Africa,
BBC World Service



Madhulika Sikka
Executive Editor News,
National Public Radio



Ray Suarez
Host, Inside Story,
Al Jazeera America



Build Your Schedule:
Use “Scan QR” from
the Skoll World
Forum mobile app
to add this session.

Funding Impact at Scale Through Market Segmentation

RHODES TRUST LECTURE THEATRE, EAST WING

For an increasing number of social entrepreneurs, achieving impact at scale requires identifying underserved customers with different levels of purchasing power and adapting their business models accordingly. These innovators and their funders are finding that extensions of current offerings can also deploy multiple kinds of capital, providing a pathway to financial sustainability. Participants will discuss the extent to which broad patterns exist across diverse sectors such as health, water access, and energy; how funders can support such efforts; and how market segmentation can positively affect the business models of NGOs implementing critical innovations.

Continue the discussion at <http://skoll.wf/swf17103>

MODERATOR



Andrew Stern
Executive Director,
Global Development Incubator, Inc.

SPEAKERS



Debbie Aung Din Taylor
Co-Founder,
Proximity Designs



Dana Hovig
Director of Integrated Delivery,
Bill & Melinda Gates Foundation



Sam Parker
Director,
Shell Foundation



Build Your Schedule:
Use “Scan QR” from
the Skoll World
Forum mobile app
to add this session.

FRIDAY 10:00–11:15AM

Cities: Engines of Transformational Change

LECTURE THEATRE 4, EAST WING

For the first time in human history, over half of the world’s people live in urban areas. By 2050, that number will reach 70 percent. Cities are rapidly becoming the focal point for pioneering development and social innovation. Mayors are playing increasingly powerful roles on the global stage, breaking through constraints of national boundaries, and urban innovators are teeming with approaches for poverty reduction, sustainable development, and citizen engagement. Join this informative and inspiring session with leaders at the forefront of transformative trends in the urban context.

Continue the discussion at <http://skoll.wf/swf17104>

MODERATOR



Emily Kasriel
Head of Editorial Partnerships,
BBC World Service;
Associate Fellow,
Saïd Business School

SPEAKERS



Benjamin Barber
Political Theorist and Author,
The Global Parliament of Mayors Project



Rodrigo Guerrero
Mayor,
City of Cali, Colombia



Alessandra Orofino
Co-Founder,
Meu Rio



Sue Riddlestone
Chief Executive and Co-Founder,
Bioregional Development Group



Build Your Schedule:
Use “Scan QR” from
the Skoll World
Forum mobile app
to add this session.

How Fast Can Small Grow? The Case for Solar Power

LECTURE THEATRE 5, EAST WING

From 2010 to 2013, development of wind and solar energy represented 30 percent of new capacity in the U.S. With costs falling dramatically these new technologies are knocking on the door of cost parity with fossil fuels. Germany generates 27 percent of its electricity from non-hydro renewable sources and Denmark, more than 40 percent. In 2013, China installed 12,000 megawatts of new solar power, 50 percent more than the previous world record and India is committing to follow suit. How will this tip the balance of power in the developing—and developed world—for the better?

Continue the discussion at <http://skoll.wf/swf17105>

MODERATOR



Aimée Christensen
Founder and CEO,
Christensen Global Strategies

SPEAKERS



Harish Hande
CEO,
SELCO Foundation



Xavier Helgesen
CEO,
Off.Grid:Electric



Danny Kennedy
Co-Founder and Senior Vice President,
Sungevity



Qi Ye
Director of the Brookings-Tsinghua
Center for Public Policy,
Brookings Institution



Stuart Rolland
Managing Director,
British Gas Business



Dipender Saluja
Managing Director,
Capricorn Investment Group



Build Your Schedule:
Use “Scan QR” from
the Skoll World
Forum mobile app
to add this session.



LUNCH: CORE SESSION

FRIDAY 11:45AM–1:00PM

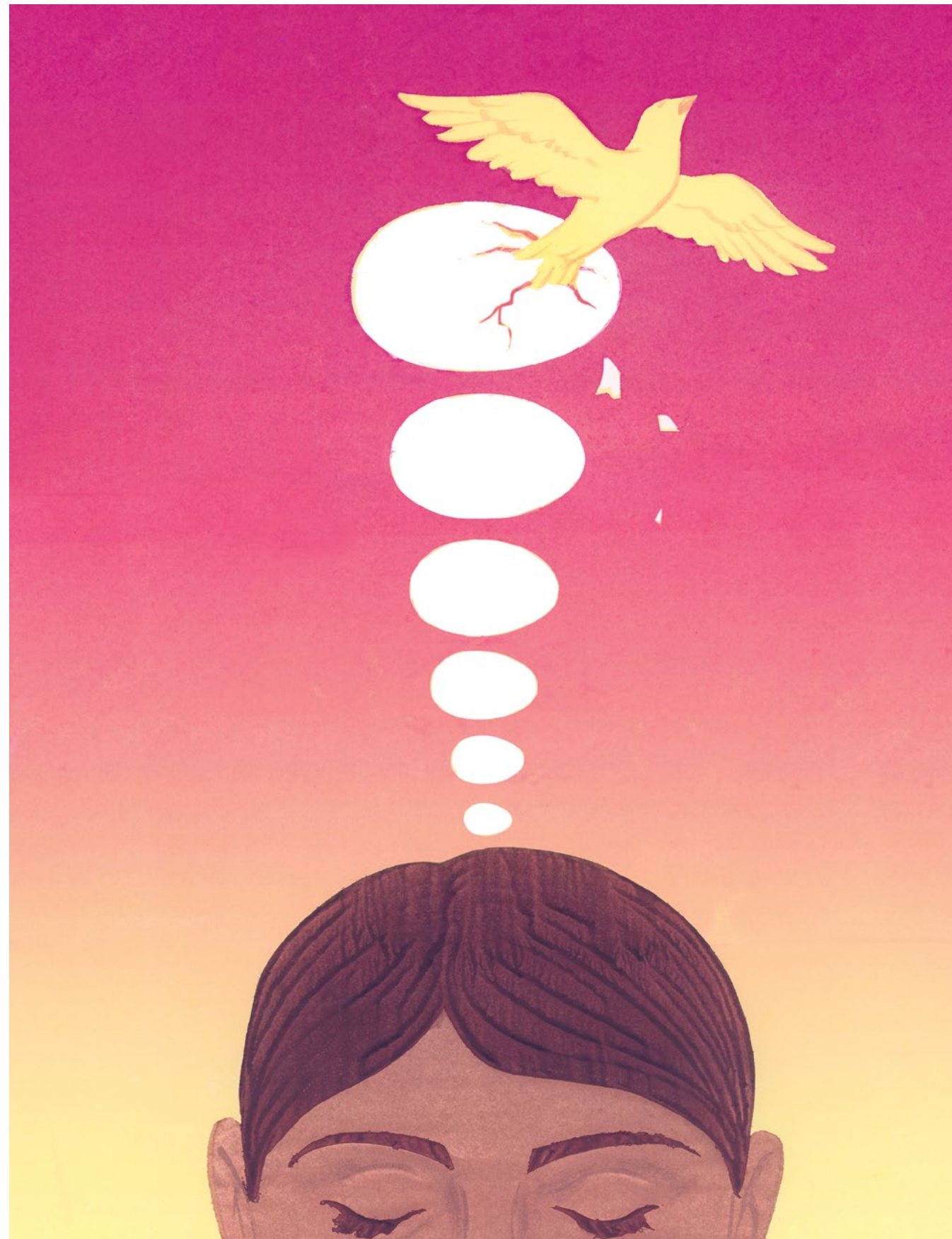
Grab lunch from the Garden Marquee and choose between the following lunchtime options:

CORE SESSION

Attend a core session for a deep panel discussion, followed by interactive Q&A.

DELEGATE-LED DISCUSSIONS

Join an intimate, peer-to-peer discussion facilitated by a Skoll World Forum delegate.



CORE LUNCH SESSION

What's So Funny? The Role of Comedy in Social Change

LECTURE THEATRE 6, WEST WING

Social change is hard, earnest work and there's nothing funny about addressing deeply entrenched social issues... or is there? Empowering those with the least means changing minds and shifting power dynamics, and the latest research shows that humor is the most effective means of reaching those whose beliefs differ from our own. In an age of media saturation, humor cuts through the noise and highlights core truths, with the potential to challenge global leaders and change the behavior of millions. Join this session to explore the power of humor to spotlight issues in a serious world.

Continue the discussion at
<http://skoll.wf/swf17111>

MODERATOR



Jess Search
CEO,
BRITDOC Foundation

SPEAKERS



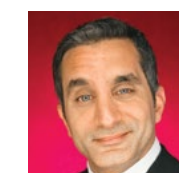
Caty Borum Chattoo
Executive in Residence, Co-Director,
Center for Media & Social Impact,
American University



Jack Sim
Founder,
World Toilet Organization



Mechai Viravaidya
Chairman,
Mechai Viravaidya Foundation



Bassem Youssef
Political Satirist



Build Your Schedule:
Use "Scan QR" from
the Skoll World
Forum mobile app
to add this session.

Mobilizing Technical Assistance to Catalyze Inclusive Markets

CLASSROOM 2, WEST WING

Which key actors should support the critical technical assistance required to develop a promising market before it’s commercially viable? Using real scenarios from current efforts in the emerging smallholder finance sector, session contributors will create a model for incentivizing value chain actors—including farmers, corporate, government, and philanthropic stakeholders—to make market-building investments. Attendees will also discuss how to price and finance investments as they evolve over time.

Thomas Carroll
Director, Initiative for Smallholder Finance, Dalberg

Lessons from a Social Entrepreneur

SEMINAR 1, WEST WING

Managing and maintaining vehicles that deliver goods and services to transform health care for people living remotely in Africa continues to be a huge barrier in lifting people out of poverty. In the early stages of development, Riders for Health had to find a way of working in areas of market failure, using business principles while lacking support, legitimacy, guidance, and specific investment. This conversation will explore how to transform an ambitious idea into a social enterprise operating at the forefront of the sector.

Andrea Coleman
CEO and Co-Founder, Riders For Health

Divesting from Fossil Fuels, Investing in Healthy Energy

SEMINAR 2, WEST WING

As the public health consequences of climate change become more dire in their scope, the health sector is waking up to a new healing mission: health professionals need to take the lead on climate change mitigation and advocacy. This session will focus on how health systems and health associations are investing in renewable energy as a strategy to improve global health while divesting from fossil fuels as part of their mission-related and moral imperative.

Gary Cohen
Co-Founder and President, Health Care Without Harm

Scaling Social Impact: From Exploration to Action

SEMINAR 3, WEST WING

Scale has eluded many development initiatives. However, there are notable exceptions in South Asia. How can the rest of the world learn from organizations that have succeeded and take sustainable scaling to the next level? Over the past two years, Nidan and BRAC’s Social Innovation Lab has led the Doing While Learning network, bringing a select group of organizations to learn together as they scale. This conversation shares some key insights for others striving to do the same.

Arbind Singh
Executive Director, Nidan

Ending the Industrial Exploitation of Tropical Forests

SEMINAR 4, WEST WING

This year will see new Sustainable Development Goals and a new climate deal. While leaders are focused on reducing fossil fuel consumption, we also need to preserve the rainforests or we lose the war against climate change. The forest sector is one of the hardest nuts to crack. The model of exploitation does not work, the economic thinking is flawed, and fundamental change is essential. The international system is not keen on substantial change, so how do we do it? We need influential thinkers to form a new international advocacy effort to keep rainforests standing.

Patrick Alley
Director and Co-Founder, Global Witness

Citizen Witnessing: Challenges and Opportunities

SEMINAR 8, WEST WING

With smart phones now in the hands of over a billion people, video is playing a critical role in exposing injustices and creating social change. People are capturing, documenting, and sharing images and stories of hope and abuse—from atrocities in Syria to LGBTI bullying in South Africa to police violence in the United States. As a result, social change activists are more diverse than ever. Discover how traditional activists and NGOs, along with media collectives, citizen journalists, accidental witnesses, and others are finding new ways to achieve their goals using this powerful tool.

Yvette Alberdingk Thijm
Executive Director, WITNESS

Bridging Water and Politics to Achieve Scale

SEMINAR 9, WEST WING

Efforts to solve the global safe drinking water challenge and to promote and strengthen transparent, democratic governments must go hand-in-hand to reach universal coverage of water, sanitation, and hygiene (WASH). Join us to discuss the connection between good government and clean water and share your experiences in solving development challenges at scale. The conversation will focus on upstream social innovation and how to accelerate change.

John Oldfield
CEO, WASH Advocates

The Shifting Tide of Human Rights Philanthropy

SEMINAR 10, WEST WING

Join a timely discussion to explore how foundations, institutions, and funders are affecting change in the human rights philanthropy ecosystem. What factors are causing this shift? How can civil society and funders work to sustain the gains of the human rights movement while simultaneously advancing to new frontiers?

Darian Swig
Founder and President, Article 3 Advisors

FRIDAY 1:15–2:30PM

WHAT ARE CORE SESSIONS?

Innovative disruptions.
Diverse points of view.
Global scale.

These attributes comprise the critical discussions, debates, and dialogue that define Skoll World Forum core sessions. Solution-oriented topics set the stage for collective action and progress on some of the world’s greatest challenges.



SESSION BLOCK 4 AT A GLANCE

The Age Before Impossible: Young Voices, Big Dreams

NELSON MANDELA LECTURE THEATRE, EAST WING

MODERATOR
Kristin Gilliss

SPEAKERS
Noam Angrist , Khalida Brohi, Pamela Hartigan, Ahsan Jamil, Joseph Opoku, Misan Rewane, Fred Swaniker, Jimena Vallejos

Food, Farming and the Future: How Can We Feed a Growing Global Population Responsibly?

EDMOND SAFRA LECTURE THEATRE, EAST WING

MODERATOR
Debra Dunn

SPEAKERS
Jason Clay, Willy Foote, Kathleen McLaughlin, Jocelyn Wyatt

Tech Partnerships: Essential Impact Accelerators

RHODES TRUST LECTURE THEATRE, EAST WING

MODERATOR
Noah Manduke

SPEAKERS
Debbie Aung Din Taylor, Rebecca Moore, Jason Payne, Carlos Souza, Jr., Joe Speicher, James Taylor, Dan Viederman

Beating the Odds: Lessons Learned from Social Innovators in Government

LECTURE THEATRE 4, EAST WING

MODERATOR
Maura O’Neill

SPEAKERS
Diana Good, Mary Robinson, Sabri Saidam

The Age Before Impossible: Young Voices, Big Dreams

NELSON MANDELA LECTURE THEATRE, EAST WING

Innovation is ageless, but young people bring a magical energy to social change. They see potential and solutions where others see poverty and problems. What do you see? Do you remember when your passion, belief, and hope for a better world outpaced your skills and ability to accomplish it—at least according to everyone else? Even dreamers need believers. This session features two perspectives on young talent: young leaders themselves defying cynics and wowing critics; and experts at the frontier of creating leaders from young dreamers. It’s inspiring—and important—to hear how raw exuberance can be harnessed into real change.

MODERATOR



Kristin Gilliss
Associate Portfolio Director,
Mulago Foundation

SPEAKERS



Noam Angrist
Co-Founder,
Executive
Director,
Young 1ove



Khalida Brohi
Founder and
Executive
Director, Sughar
Empowerment
Society



Pamela Hartigan
Director, Skoll
Centre for
Social Entre-
preneurship



Ahsan Jamil
CEO,
The Aman
Foundation



Joseph Opoku
Alumni,
African
Leadership
Academy



Misan Rewane
CEO,
WAVE
(West African
Vocational
Education)



Fred Swaniker
Founder and
Chairman,
African
Leadership
Group



Jimena Vallejos
Poverty
Spotlight
Coordinator,
Fundación
Paraguay



Build Your Schedule: Use “Scan QR” from the Skoll World Forum mobile app to add this session.

Continue the discussion at <http://skoll.wf/swf1711>

FRIDAY 1:15-2:30PM

Food, Farming and the Future:
How Can We Feed a Growing
Global Population Responsibly?

EDMOND SAFRA LECTURE THEATRE,
EAST WING

The challenge? Enable 500 million smallholder farmers to play a vital role in feeding 25 percent more people and do it with radically less environmental damage. Is sustainable intensification a viable approach? How can human-centered design enable the adoption of forward thinking innovations? Can global players like Walmart and World Wildlife Fund engage with smallholder farmers to help ensure sufficient, sustainable food production while increasing farmer prosperity? We'll explore promising developments and tough obstacles with leaders on the front line.

Continue the discussion at
<http://skoll.wf/swf1714>

MODERATOR



Debra Dunn
Consulting Associate Professor,
Stanford University

SPEAKERS



Jason Clay
Senior Vice President, Markets and Food,
World Wildlife Fund US



Willy Foote
Founder and CEO,
Root Capital



Kathleen McLaughlin
President,
Walmart Foundation



Jocelyn Wyatt
Co-Lead and Executive Director,
IDEO.org



Build Your Schedule:
Use "Scan QR" from
the Skoll World
Forum mobile app
to add this session.

Tech Partnerships: Essential
Impact Accelerators

RHODES TRUST LECTURE THEATRE,
EAST WING

Data analytics that expose modern slavery. Satellites that battle deforestation. Design tools that create income-boosting products for the rural poor. These are not extraordinary headlines. This is the new normal. Leading social entrepreneurs leverage technology to accelerate impact. How do they do it? How do they tap into the heart of technology to fuel large-scale change? How do such partnerships get forged and become force multipliers in the field? Which companies are redeploying commercial applications to drive social progress? This working session will offer direct insights from very special partnerships and audience participants alike.



Build Your Schedule:
Use "Scan QR" from
the Skoll World
Forum mobile app
to add this session.

MODERATOR



Noah Manduke
President,
Durable Good

SPEAKERS



Debbie Aung Din Taylor
Co-Founder,
Proximity Designs



Rebecca Moore
Engineering Manager,
Google



Jason Payne
Philanthropy Engineering Lead,
Palantir Technologies



Carlos Souza, Jr.
Senior Researcher,
Imazon



Joe Speicher
Executive Director,
Autodesk Foundation



James Taylor
CEO,
Proximity Designs



Dan Viederman
Executive Director,
Vérite

Continue the discussion at
<http://skoll.wf/swf1712>

FRIDAY 1:15-2:30PM

Beating the Odds: Lessons Learned from Social Innovators in Government

LECTURE THEATRE 4, EAST WING

Courage and innovation in government is not only essential to large-scale change, but must be led by individuals who have the will, skill, and fierce determination to achieve their goals. Join this candid dialogue for a behind-the-scenes look at what it takes to drive change in an arena fraught with entrenched mindsets, political quagmire, and formidable foes. Hear from inspiring leaders who have navigated this terrain successfully and driven transformative change from the inside out. Attendees will gain actionable insights for building powerful alliances, choosing battles, and sustaining momentum against the odds.

Continue the discussion at <http://skoll.wf/swf1713>

MODERATOR



Maura O'Neill
Instructor,
University of California, Berkeley

SPEAKERS



Diana Good
Commissioner,
Independent Commission
for Aid Impact



Mary Robinson
President,
Mary Robinson Foundation—
Climate Justice



Sabri Saidam
Executive Chairman (Netketabi),
Former Presidential Advisor



Build Your Schedule:
Use "Scan QR" from
the Skoll World
Forum mobile app
to add this session.



Share your experience using the #SKOLLWF hashtag on Twitter, Instagram, and Facebook. And don't forget to find our Selfie Booth or snap your own photos of your experience and share them with the world using the #HumansofSWF hashtag!

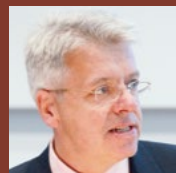


CREATIVE ACTIVISM CLOSING PLENARY

FRIDAY 3:30–5:00PM, NEW THEATRE

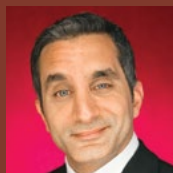
Doors open at 3:00pm. Seating is general admission.

MASTER OF CEREMONIES



Stephan Chambers
Chairman,
Skoll Centre for Social Entrepreneurship;
MBA Director,
Saïd Business School, University of Oxford

COMEDY AND CONTROVERSY

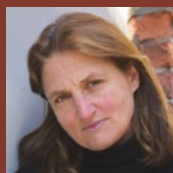


Bassem Youssef
Political Satirist

CREATIVE ACTIVISM: A WINDOW INTO THE WORLD OF ARTISTS AND SOCIAL ENTREPRENEURS



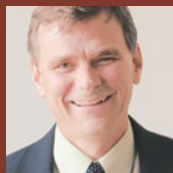
Ken Brecher
President,
Library Foundation of Los Angeles



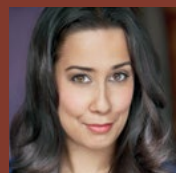
Susan Meiselas
President,
Magnum Foundation;
Photographer



Darren Walker
President,
Ford Foundation



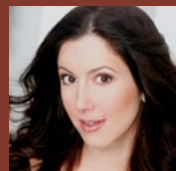
Ned Breslin
CEO,
Water For People



Monica Yunus
Co-Founding Director,
Sing for Hope;
Soprano



Feliciano dos Santos
Director,
ESTAMOS Organização Comunitária



Camille Zamora
Co-Founding Director,
Sing for Hope;
Soprano

MUSICAL PERFORMANCE: MASSUKOS



Saïd Business School at the University of Oxford blends the best of new and old. It is a vibrant and innovative business school, yet deeply embedded in an 800-year-old world-class university. It creates programmes and ideas that have global impact, and educates people for successful business careers. The school delivers cutting-edge programmes and ground-breaking research that transforms individuals, organisations, and society. It seeks to be a world-class business school, embedded in a world-class university, tackling world-scale problems.



The Skoll Centre at Saïd Business School, embedded within the University of Oxford, is a leading academic entity for the advancement of social entrepreneurship worldwide. Since 2004, the Skoll Scholarship program has created and supported 52 Scholars through the Oxford MBA. Skoll Scholars are single-minded and persistent in their pursuit of lasting social change. Information on Skoll Scholars and the inspiring work they've been part of can be found at skollscholarship.org.



WI-FI INFO

Free Wi-Fi powered by The Cloud is now available throughout Saïd Business School and many other venues in Oxford. Create an account using a unique username and password by logging in through your browser when you enter a Cloud Wi-Fi hotspot. For questions, visit the IT Help Desk.



THANK YOU

PRODUCING PARTNERS

A Caspian Production
Maire McCarthy Projects
Partytecture
Saïd Business School, University of Oxford
Skoll Centre for Social Entrepreneurship

CREATIVE PARTNERS

Alex Nabaum (Major Illustrations)
Andrew Zuckerman
Beighley Films
Black Toyon Productions
Daryl Higgins Productions
David Fisher Photography
Frontline
Getty Images
Goldman Prize
Maria Padget
Michael Collopy Photography
Mill Valley Film Group
Outside Films
Oxford Digital Media
Photovibe
Studio Hinrichs
Thinkstock
Zerista

ENVIRONMENTAL FOOTPRINT

To minimize the footprint of the Skoll World Forum, we have taken great care to ensure that the entire event prioritizes sustainable practices. Therefore, each and every product you see at the Forum, from signage and production sets to the furniture, was made using local, sustainable products and reused from prior years when possible.

In addition, any paper materials were made using responsible sources. Whenever possible, meals include fair-trade products and local produce.

Specific practices include:

- Using local, sustainable, and fair-trade items in lunches and delegate meals when possible
- Placing composting and recycling stations throughout meeting venues
- Using reusable signage to eliminate one-time-usage as much as possible
- Printing programs with responsible sources
- Eliminating all extraneous packaging, such as bags and folders
- Collecting and reusing bamboo lanyards and plastic badge holders
- Providing reusable water bottles and water stations
- Encouraging mass transit to the Forum from London
- Providing a carbon-offset link for attendees to offset their travel



PLEASE LEAVE YOUR BADGE AND LANYARD AT SAÏD BUSINESS SCHOOL TO BE REUSED. THANK YOU!

The mission of the Skoll World Forum is to accelerate the impact of the world’s leading social entrepreneurs by connecting them with essential partners in a collaborative pursuit of learning, leverage, and large-scale social change.

PARTNERS

The Skoll World Forum is proud to partner with visionary institutions that support social entrepreneurship worldwide.

STRATEGIC PARTNERS



CONTENT PARTNERS



OXFORD

TAXIS

Taxis are available from Oxford Railway Station.

SAÏD BUSINESS SCHOOL

All venues are located within the Saïd Business School unless otherwise stated.

NEW THEATRE

New Theatre is a 10-minute walk from Saïd Business School.

Seating is general admission.

Doors open 30 minutes prior to start.

REGISTRATION AND HELP DESK

Entrance Hall

Wednesday, Thursday, and Friday

8:00am–5:00pm

SKOLL WORLD FORUM BADGES

Required for all Forum events.

LUGGAGE AND CLOAKROOM

Ask at Help Desk.

FORUM SESSIONS

First come, first served.

Arrive early to guarantee entry.

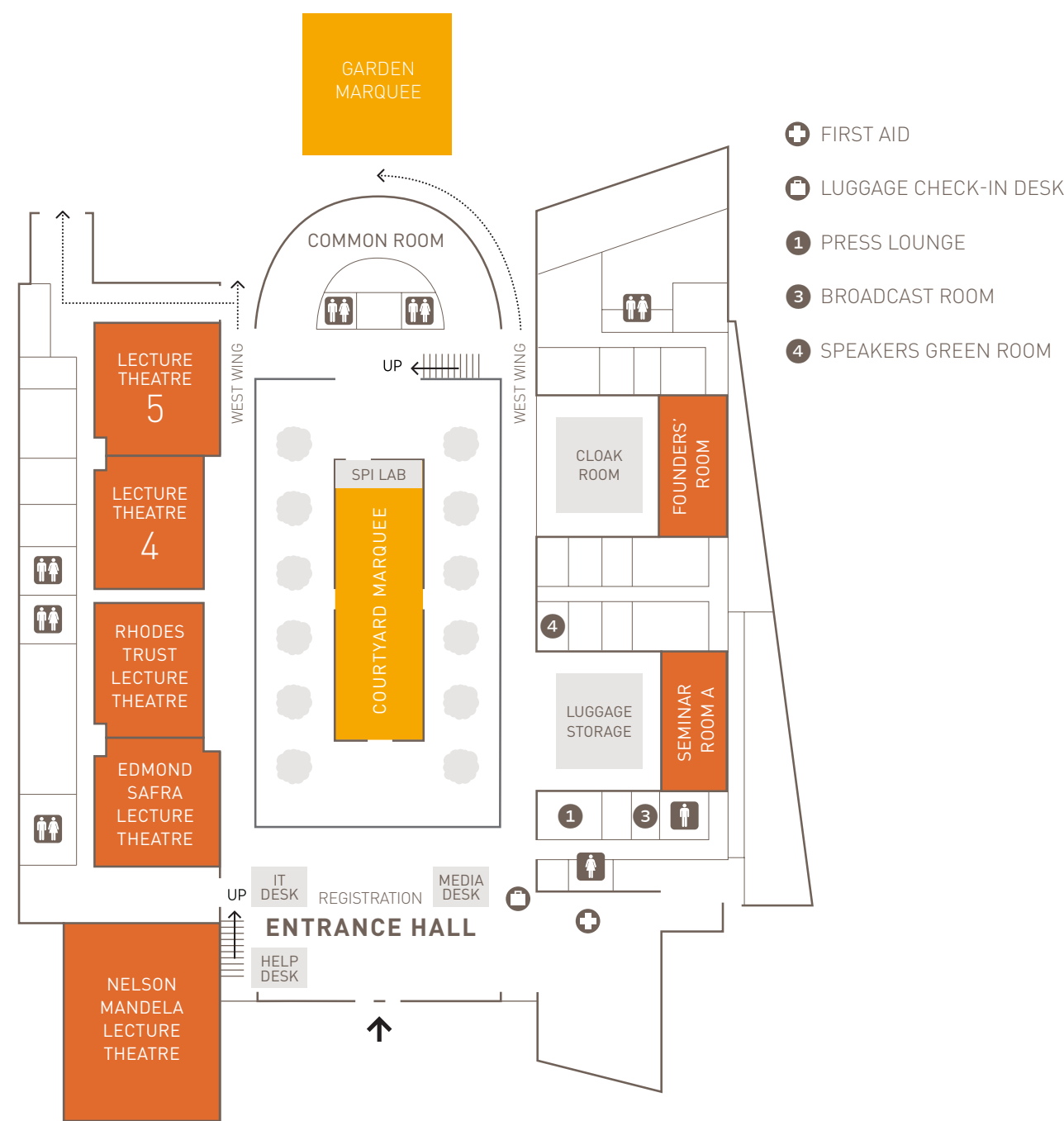
WIRELESS NETWORK

Free Wi-Fi powered by The Cloud.

For questions, visit the Help Desk.

SAÏD BUSINESS SCHOOL

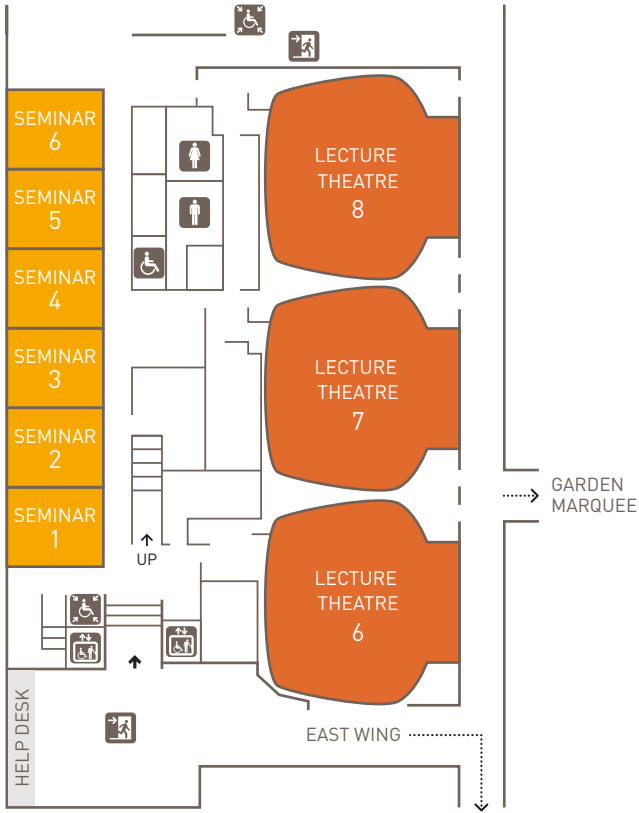
EAST WING



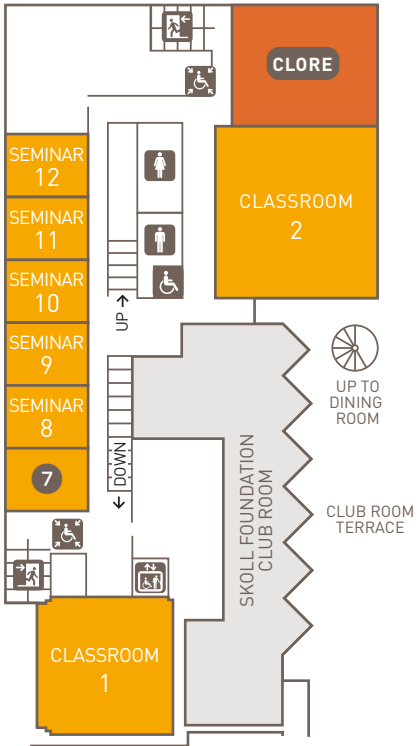
SAÏD BUSINESS SCHOOL

WEST WING

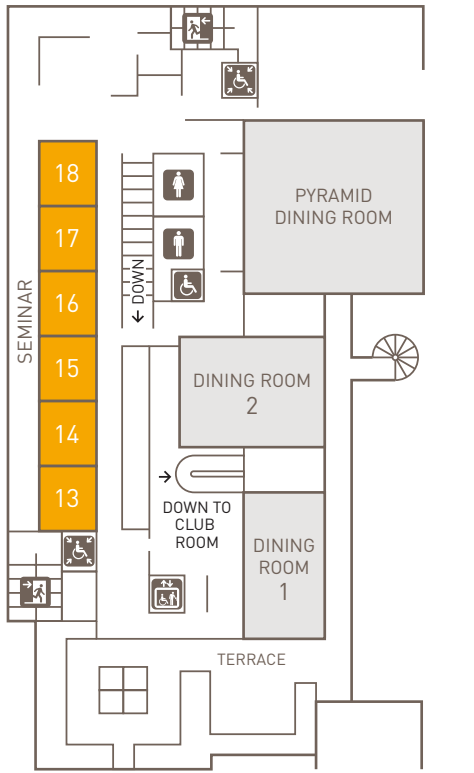
1ST/GROUND FLOOR



2ND FLOOR



3RD FLOOR





SAVE THE DATE
APRIL 13-15, 2016